

SCHEDULE OF RIGHTS AND EASEMENTS

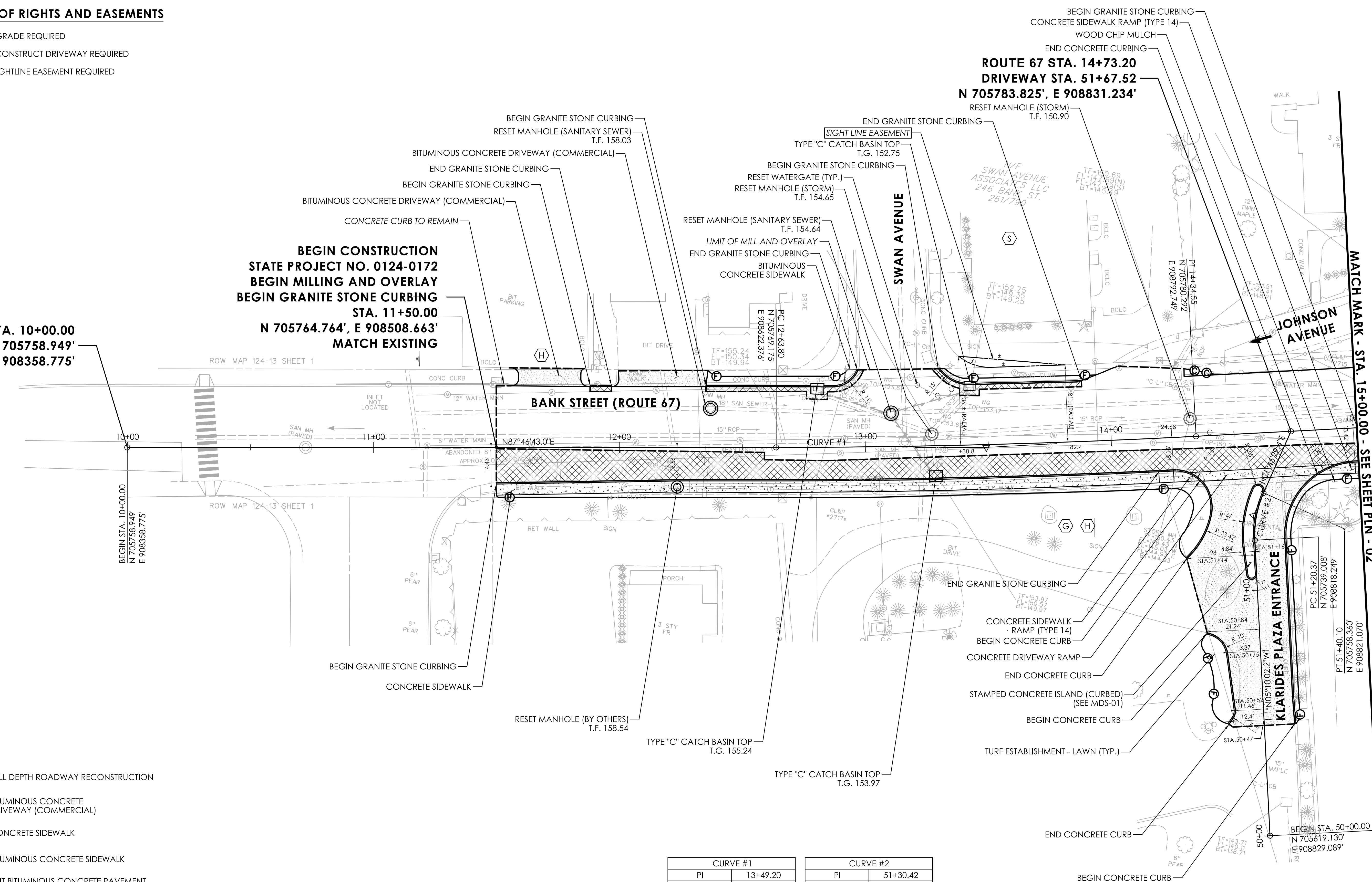
- RIGHT TO GRADE REQUIRED
- RIGHT TO CONSTRUCT DRIVEWAY REQUIRED
- DEFINED SIGHTLINE EASEMENT REQUIRED

STA. 10+00.00
N 705758.949'
E 908358.775'

**BEGIN CONSTRUCTION
STATE PROJECT NO. 0124-0172
BEGIN MILLING AND OVERLAY
BEGIN GRANITE STONE CURBING
STA. 11+50.00
N 705764.764', E 908508.663'
MATCH EXISTING**

**ROUTE 67 STA. 14+73.20
DRIVEWAY STA. 51+67.52
N 705783.825', E 908831.234'**

MATCH MARK - STA. 15+00.00 - SEE SHEET PLN - 02



- LEGEND**
- FULL DEPTH ROADWAY RECONSTRUCTION
 - BITUMINOUS CONCRETE DRIVEWAY (COMMERCIAL)
 - CONCRETE SIDEWALK
 - BITUMINOUS CONCRETE SIDEWALK
 - CUT BITUMINOUS CONCRETE PAVEMENT
 - SEDIMENTATION CONTROL SYSTEM AT CATCH BASIN
 - DEFINED EASEMENT
 - TAKING LINE

CURVE #1		CURVE #2	
PI	13+49.20	PI	51+30.42
DELTA	03°01'27.4"	DELTA	26°55'31.6"
D	01°46'16.0"	D	136°25'06.7"
T	85.397'	T	10.054'
L	170.754'	L	19.737'
R	3235.000'	R	42.000'

REV.	DATE	REVISION DESCRIPTION

UTILITY TEST PIT DATA

GAS (EVERSOURCE)								
Test Pit #	BASELINE		NORTHING	EASTING	GROUND ELEVATION (FT)	TOP OF PIPE ELEVATION (FT)	UTILITY DESCRIPTION	RELOCATION ANTICIPATED
	STATION	OFFSET						
G-1	18+69	18.5' L	705839.39	909225.36	140.82	137.33	8" Steel Gas	YES
G-2	19+17	38.5' R	705790.05	909266.96	140.09	138.29	8" Steel Gas	NO
"	"	"	705790.56	909266.40	"	138.05	1/2" Service Line	NO
"	"	"	705790.37	909268.02	"	137.50	24" RCP	N/A

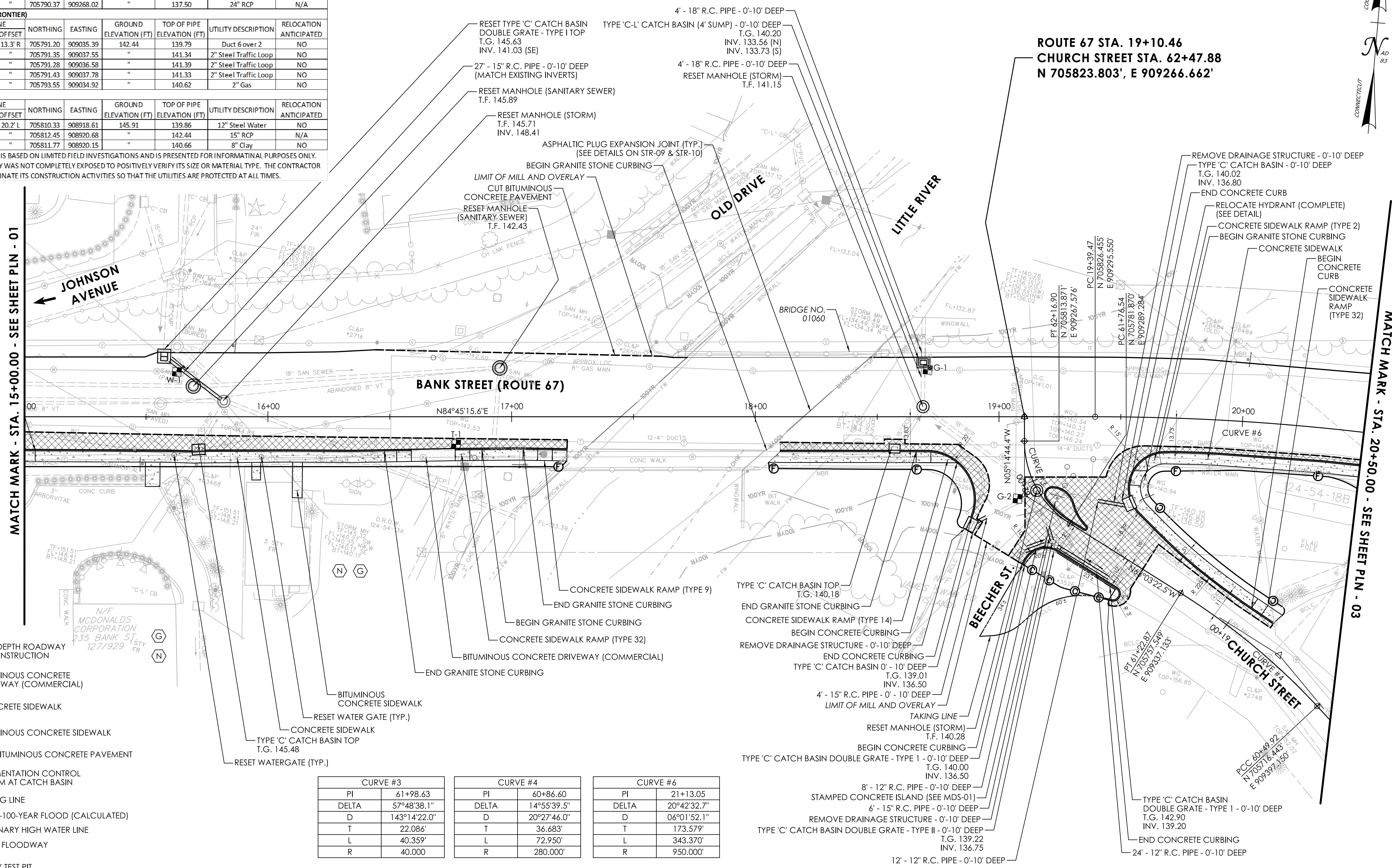
TELECOMMUNICATIONS (FRONTIER)								
Test Pit #	BASELINE		NORTHING	EASTING	GROUND ELEVATION (FT)	TOP OF PIPE ELEVATION (FT)	UTILITY DESCRIPTION	RELOCATION ANTICIPATED
	STATION	OFFSET						
T-1	16+65	13.3' R	705791.20	909035.39	142.44	139.79	Duct 6 over 2	NO
"	"	"	705791.35	909037.55	"	141.34	2" Steel Traffic Loop	NO
"	"	"	705791.28	909036.58	"	141.39	2" Steel Traffic Loop	NO
"	"	"	705791.43	909037.78	"	141.33	2" Steel Traffic Loop	NO
"	"	"	705793.55	909034.92	"	140.62	2" Gas	NO

WATER (AQUARIUM)								
Test Pit #	BASELINE		NORTHING	EASTING	GROUND ELEVATION (FT)	TOP OF PIPE ELEVATION (FT)	UTILITY DESCRIPTION	RELOCATION ANTICIPATED
	STATION	OFFSET						
W-1	15+63	20.2' L	705810.33	908918.61	145.91	139.86	12" Steel Water	NO
"	"	"	705812.45	908920.68	"	142.44	15" RCP	N/A
"	"	"	705811.77	908920.15	"	140.66	8" Clay	NO

THIS UTILITY INFORMATION IS BASED ON LIMITED FIELD INVESTIGATIONS AND IS PRESENTED FOR INFORMATIONAL PURPOSES ONLY. IN SOME CASES THE FACILITY WAS NOT COMPLETELY EXPOSED TO POSITIVELY VERIFY ITS SIZE OR MATERIAL TYPE. THE CONTRACTOR IS STILL REQUIRED TO COORDINATE ITS CONSTRUCTION ACTIVITIES SO THAT THE UTILITIES ARE PROTECTED AT ALL TIMES.

SCHEDULE OF RIGHTS AND EASEMENTS

- (G) RIGHT TO GRADE REQUIRED
- (N) RIGHT TO CONSTRUCT SIDEWALK REQUIRED



**ROUTE 67 STA. 19+10.46
CHURCH STREET STA. 62+47.88
N 705823.803', E 909266.662'**



LEGEND

- FULL DEPTH ROADWAY RECONSTRUCTION
- BITUMINOUS CONCRETE DRIVEWAY (COMMERCIAL)
- CONCRETE SIDEWALK
- BITUMINOUS CONCRETE SIDEWALK
- CUT BITUMINOUS CONCRETE PAVEMENT
- SEDIMENTATION CONTROL SYSTEM AT CATCH BASIN
- TAKING LINE
- FEMA-100-YEAR FLOOD (CALCULATED)
- ORDINARY HIGH WATER LINE
- FEMA FLOODWAY
- UTILITY TEST PIT

CURVE #3		CURVE #4		CURVE #6	
PI	61+98.63	PI	60+86.60	PI	21+13.05
DELTA	57°48'38.1"	DELTA	14°55'39.5"	DELTA	20°42'32.7"
D	143°14'22.0"	D	20°27'46.0"	D	06°01'52.1"
T	22.086'	T	36.683'	T	173.579'
L	40.359'	L	72.950'	L	343.370'
R	40.000'	R	280.000'	R	950.000'

REV.	DATE	REVISION DESCRIPTION

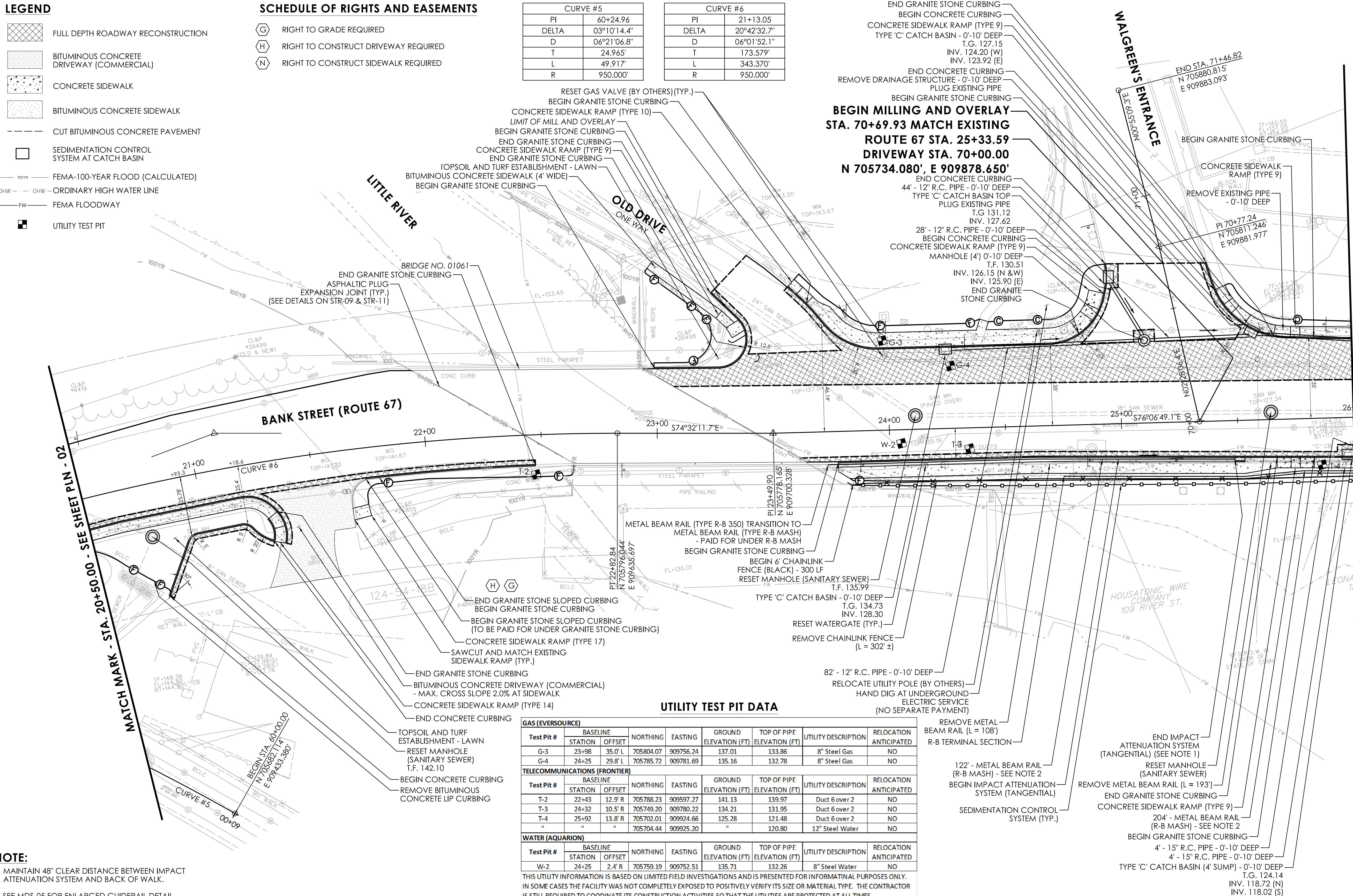
LEGEND

- FULL DEPTH ROADWAY RECONSTRUCTION
- BITUMINOUS CONCRETE DRIVEWAY (COMMERCIAL)
- CONCRETE SIDEWALK
- BITUMINOUS CONCRETE SIDEWALK
- CUT BITUMINOUS CONCRETE PAVEMENT
- SEDIMENTATION CONTROL SYSTEM AT CATCH BASIN
- FEMA-100-YEAR FLOOD (CALCULATED)
- ORDINARY HIGH WATER LINE
- FEMA FLOODWAY
- UTILITY TEST PIT

SCHEDULE OF RIGHTS AND EASEMENTS

- RIGHT TO GRADE REQUIRED
- RIGHT TO CONSTRUCT DRIVEWAY REQUIRED
- RIGHT TO CONSTRUCT SIDEWALK REQUIRED

CURVE #5		CURVE #6	
PI	60+24.96	PI	21+13.05
DELTA	03°10'14.4"	DELTA	20°42'32.7"
D	06°21'06.8"	D	06°01'52.1"
T	24.965'	T	173.579'
L	49.917'	L	343.370'
R	950.000'	R	950.000'



NOTE:
 1. MAINTAIN 48" CLEAR DISTANCE BETWEEN IMPACT ATTENUATION SYSTEM AND BACK OF WALK.
 2. SEE MDS-05 FOR ENLARGED GUIDERAIL DETAIL.

REVISION DESCRIPTION

REV.	DATE	DESCRIPTION

DESIGNER/DRAFTER: W. STANGO CHECKED BY: K. BROWN

LASTED SAVED BY: mmancini FILE NAME: \\c:\alpha\us.slr\local\wfs-jobs\CADDesign\CTDOT\Projects\124-165\Highways\MSA_Contract_Sheet_Files\HW_CP_0124-0165_PLN_NEW.dgn
 PLOTTED DATE: 6/16/2023

HORIZONTAL SCALE
 1" = 20'

SIGNATURE/BLOCK:

SCHEDULE OF RIGHTS AND EASEMENTS

- (A) EASEMENT TO SLOPE FOR THE SUPPORT OF THE HIGHWAY
- (B) EASEMENT TO SLOPE FOR THE SAFETY OF THE HIGHWAY AND REMOVE, USE, OR RETAIN EXCAVATED MATERIAL REQUIRED
- (C) EASEMENT TO SLOPE FOR THE SUPPORT OF THE HIGHWAY REQUIRED
- (G) RIGHT TO GRADE REQUIRED
- (H) RIGHT TO CONSTRUCT DRIVEWAY REQUIRED
- (N) RIGHT TO CONSTRUCT SIDEWALK REQUIRED
- (U) EASEMENT TO CONSTRUCT AND MAINTAIN RETAINING WALL REQUIRED

CURVE #7	
PI	30+59.75
DELTA	14°56'56.4"
D	03°49'11.0"
T	196.800'
L	391.364'
R	1500.000'

LEGEND

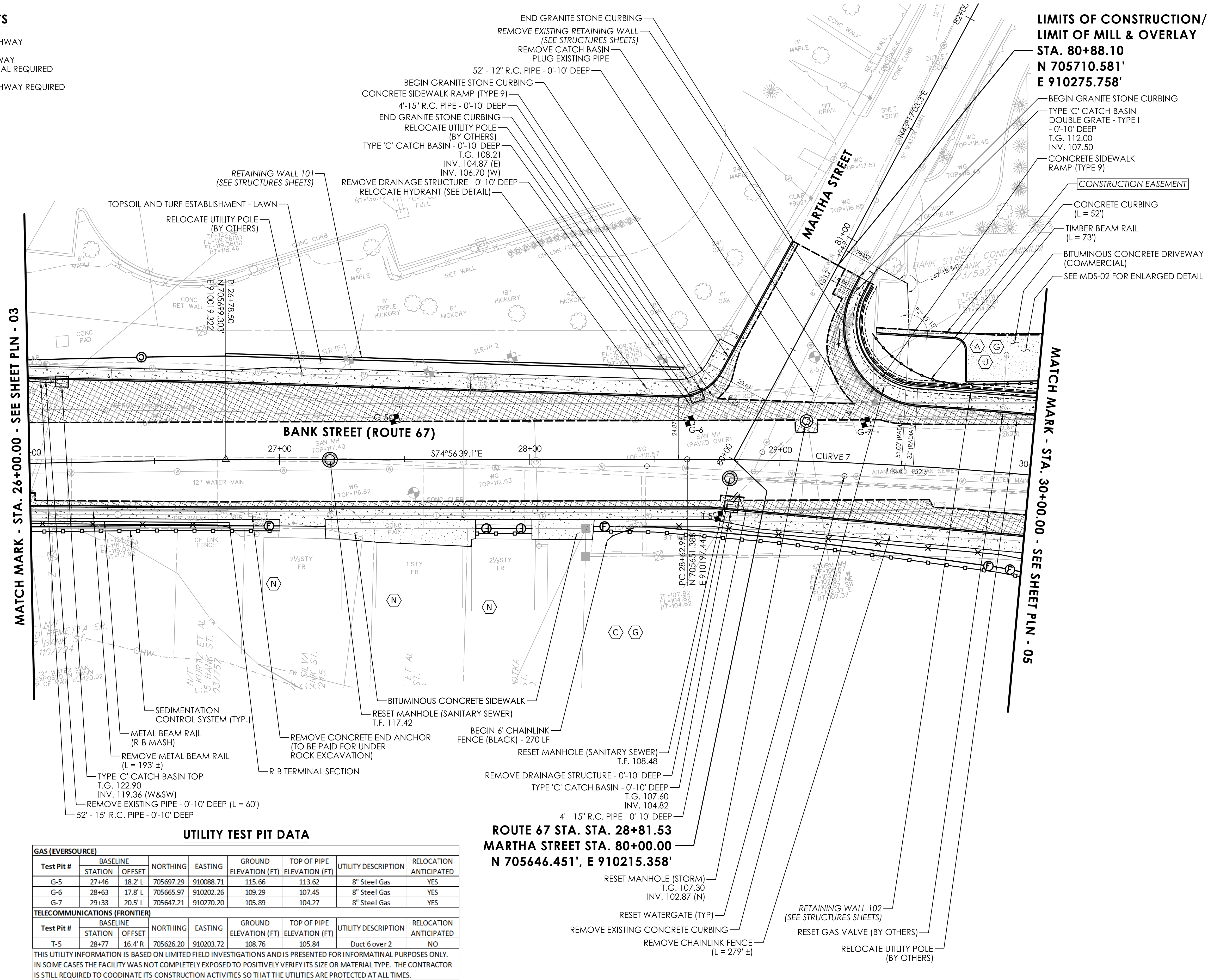
- FULL DEPTH ROADWAY RECONSTRUCTION
- BITUMINOUS CONCRETE DRIVEWAY (COMMERCIAL)
- CONCRETE SIDEWALK
- BITUMINOUS CONCRETE SIDEWALK
- CUT BITUMINOUS CONCRETE PAVEMENT
- SEDIMENTATION CONTROL SYSTEM AT CATCH BASIN
- DEFINED EASEMENT
- FEMA-100-YEAR FLOOD (CALCULATED)
- ORDINARY HIGH WATER LINE
- BORING
- SOIL TEST PIT
- UTILITY TEST PIT

UTILITY TEST PIT DATA

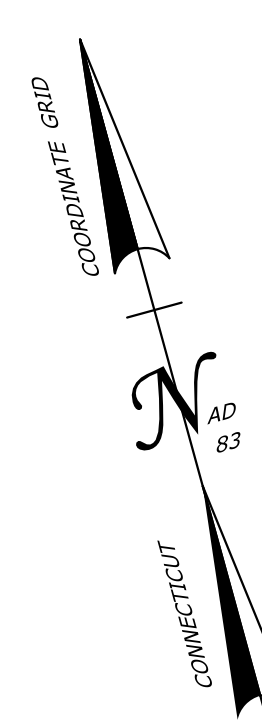
GAS (EVERSOURCE)								
Test Pit #	BASELINE		NORTHING	EASTING	GROUND ELEVATION (FT)	TOP OF PIPE ELEVATION (FT)	UTILITY DESCRIPTION	RELOCATION ANTICIPATED
	STATION	OFFSET						
G-5	27+46	18.2' L	705697.29	910088.71	115.66	113.62	8" Steel Gas	YES
G-6	28+63	17.8' L	705665.97	910202.26	109.29	107.45	8" Steel Gas	YES
G-7	29+33	20.5' L	705647.21	910270.20	105.89	104.27	8" Steel Gas	YES

TELECOMMUNICATIONS (FRONTIER)								
Test Pit #	BASELINE		NORTHING	EASTING	GROUND ELEVATION (FT)	TOP OF PIPE ELEVATION (FT)	UTILITY DESCRIPTION	RELOCATION ANTICIPATED
	STATION	OFFSET						
T-5	28+77	16.4' R	705626.20	910203.72	108.76	105.84	Duct 6 over 2	NO

THIS UTILITY INFORMATION IS BASED ON LIMITED FIELD INVESTIGATIONS AND IS PRESENTED FOR INFORMATIONAL PURPOSES ONLY. IN SOME CASES THE FACILITY WAS NOT COMPLETELY EXPOSED TO POSITIVELY VERIFY ITS SIZE OR MATERIAL TYPE. THE CONTRACTOR IS STILL REQUIRED TO COORDINATE ITS CONSTRUCTION ACTIVITIES SO THAT THE UTILITIES ARE PROTECTED AT ALL TIMES.



**LIMITS OF CONSTRUCTION/
LIMIT OF MILL & OVERLAY**
STA. 80+88.10
N 705710.581'
E 910275.758'



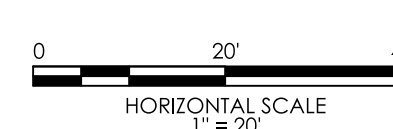
MATCH MARK - STA. 26+00.00 - SEE SHEET PLN - 03

MATCH MARK - STA. 30+00.00 - SEE SHEET PLN - 05

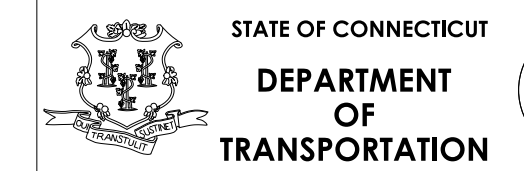
ROUTE 67 STA. STA. 28+81.53
MARTHA STREET STA. 80+00.00
N 705646.451', E 910215.358'

REV.	DATE	REVISION DESCRIPTION

DESIGNER/DRAFTER: W.STANGO CHECKED BY: K.BROWN



SIGNATURE/
BLOCK:



PROJECT NUMBER: 0124-0172
 PROJECT DESCRIPTION: SPOT IMPROVEMENTS ON BANK STREET (ROUTE 67) AND RIVER STREET (ROUTE 313)
 TOWN(S): SEYMOUR
 DRAWING TITLE: ROADWAY PLAN

DRAWING NO.
PLN-04
 SHEET NO.
01.27

UTILITY TEST PIT DATA (GAS)

Test Pit #	STATION	OFFSET	NORTHING	EASTING	GROUND ELEVATION (FT)	TOP OF PIPE ELEVATION (FT)	UTILITY DESCRIPTION	RELOCATION ANTICIPATED
G-8	31+07	3.4' L	705573.18	910439.22	96.25	93.89	2" Plastic Gas	NO
"	"	"	705572.65	910433.20	96.47	95.97	Water Gate	NO
"	"	"	705573.48	910433.53	"	91.45	6" Steel Water	NO
G-9	32+30	40.3' L	705550.07	910558.04	91.90	91.83	Gas Gate	NO
"	"	"	705550.24	910558.52	"	88.89	8" Steel Gas	NO
G-10	32+82	29.2' L	705515.44	910592.82	92.19	89.23	8" Steel Gas	NO

THIS UTILITY INFORMATION IS BASED ON LIMITED FIELD INVESTIGATIONS AND IS PRESENTED FOR INFORMATIONAL PURPOSES ONLY. IN SOME CASES THE FACILITY WAS NOT COMPLETELY EXPOSED TO POSITIVELY VERIFY ITS SIZE OR MATERIAL TYPE. THE CONTRACTOR IS STILL REQUIRED TO COORDINATE ITS CONSTRUCTION ACTIVITIES SO THAT THE UTILITIES ARE PROTECTED AT ALL TIMES.

SCHEDULE OF RIGHTS AND EASEMENTS

- (A) EASEMENT TO SLOPE FOR THE SUPPORT OF THE HIGHWAY
- (B) EASEMENT TO SLOPE FOR THE SAFETY OF THE HIGHWAY AND REMOVE, USE, OR RETAIN EXCAVATED MATERIAL REQUIRED
- (C) EASEMENT TO SLOPE FOR THE SUPPORT OF THE HIGHWAY REQUIRED
- (G) RIGHT TO GRADE REQUIRED
- (H) RIGHT TO CONSTRUCT DRIVEWAY REQUIRED
- (N) RIGHT TO CONSTRUCT SIDEWALK REQUIRED
- (S) DEFINED SIGHTLINE EASEMENT REQUIRED

CURVE #7

PI	30+59.75
DELTA	14°56'56.4"
D	03°49'11.0"
T	196.800'
L	391.364'
R	1500.000'

CURVE #8

PI	44+71.13
DELTA	32°34'35.4"
D	25°48'32.1"
T	64.868'
L	126.222'
R	222.000'

CURVE #9

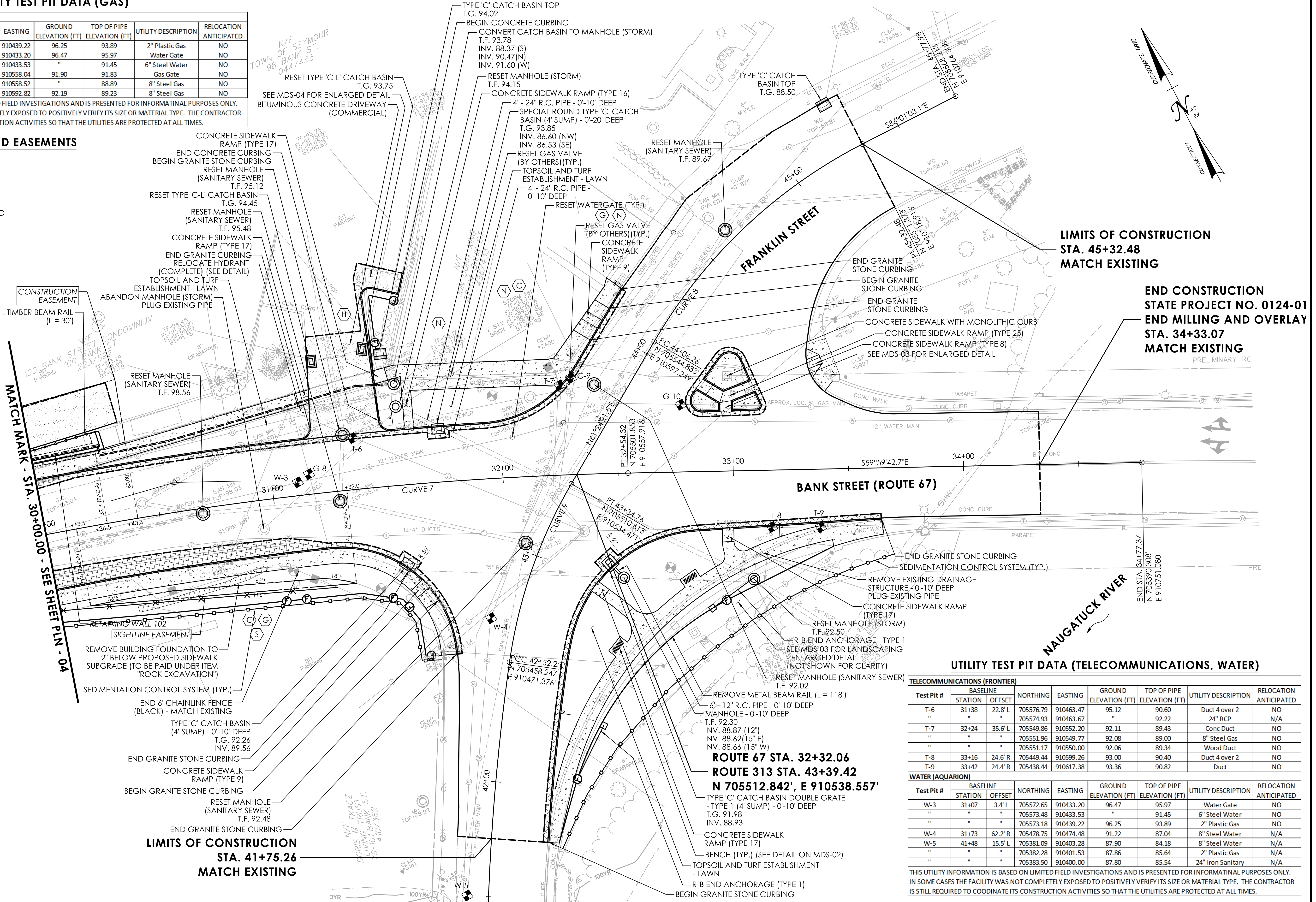
PI	42+93.03
DELTA	22°11'40.3"
D	26°53'57.9"
T	41.778'
L	82.509'
R	213.000'

LEGEND

- END 6' CHAINLINK FENCE (BLACK) - MATCH EXISTING
- TYPE 'C' CATCH BASIN (4' SUMP) - 0'-10' DEEP T.G. 92.26 INV. 89.56
- END GRANITE STONE CURBING
- CONCRETE SIDEWALK RAMP (TYPE 9)
- BEGIN GRANITE STONE CURBING
- RESET MANHOLE (SANITARY SEWER) T.F. 92.48
- END GRANITE STONE CURBING
- LIMITS OF CONSTRUCTION STA. 41+75.26 MATCH EXISTING
- 100YR
- OHW
- FW

MATCH MARK - STA. 30+00.00 - SEE SHEET PLN - 04

LIMITS OF CONSTRUCTION
STA. 41+75.26
MATCH EXISTING



UTILITY TEST PIT DATA (TELECOMMUNICATIONS, WATER)

TELECOMMUNICATIONS (FRONTIER)								
Test Pit #	STATION	OFFSET	NORTHING	EASTING	GROUND ELEVATION (FT)	TOP OF PIPE ELEVATION (FT)	UTILITY DESCRIPTION	RELOCATION ANTICIPATED
T-6	31+38	22.8' L	705576.79	910463.47	95.12	90.60	Duct 4 over 2	NO
"	"	"	705574.93	910463.67	"	92.22	24" RCP	N/A
T-7	32+24	35.6' L	705549.86	910552.20	92.11	89.43	Conc Duct	NO
"	"	"	705551.96	910549.77	92.08	89.00	8" Steel Gas	NO
"	"	"	705551.17	910550.06	92.06	89.34	Wood Duct	NO
T-8	33+16	24.6' R	705449.44	910599.26	93.00	90.40	Duct 4 over 2	NO
T-9	33+42	24.4' R	705438.44	910617.38	93.36	90.82	Duct	NO

WATER (AQUARIUM)								
Test Pit #	STATION	OFFSET	NORTHING	EASTING	GROUND ELEVATION (FT)	TOP OF PIPE ELEVATION (FT)	UTILITY DESCRIPTION	RELOCATION ANTICIPATED
W-3	31+07	3.4' L	705573.18	910433.20	96.47	95.97	Water Gate	NO
"	"	"	705573.48	910433.53	"	91.45	6" Steel Water	NO
"	"	"	705573.18	910439.22	96.25	93.89	2" Plastic Gas	NO
W-4	31+73	62.2' R	705478.75	910474.48	91.22	87.04	8" Steel Water	N/A
W-5	41+48	15.5' L	705381.09	910403.28	87.90	84.18	8" Steel Water	N/A
"	"	"	705382.28	910401.53	87.86	85.64	2" Plastic Gas	N/A
"	"	"	705383.50	910400.00	87.80	85.54	24" Iron Sanitary	N/A

THIS UTILITY INFORMATION IS BASED ON LIMITED FIELD INVESTIGATIONS AND IS PRESENTED FOR INFORMATIONAL PURPOSES ONLY. IN SOME CASES THE FACILITY WAS NOT COMPLETELY EXPOSED TO POSITIVELY VERIFY ITS SIZE OR MATERIAL TYPE. THE CONTRACTOR IS STILL REQUIRED TO COORDINATE ITS CONSTRUCTION ACTIVITIES SO THAT THE UTILITIES ARE PROTECTED AT ALL TIMES.