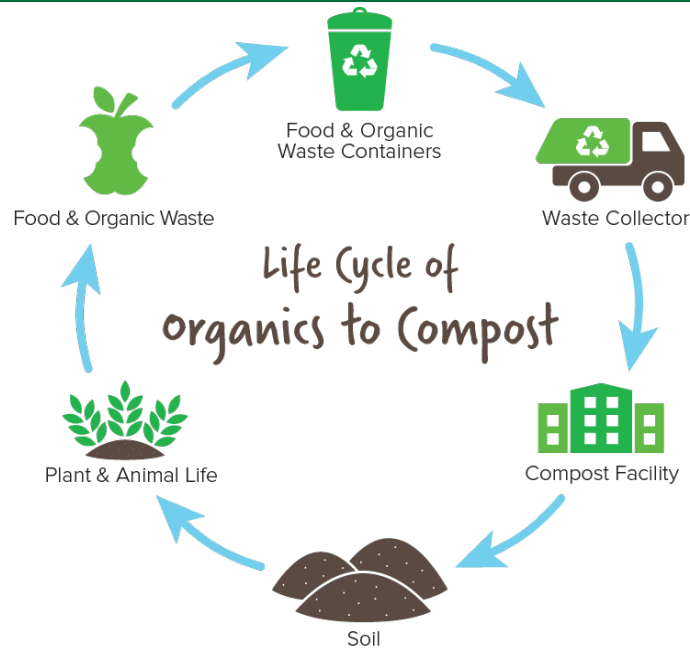


JULY 2022

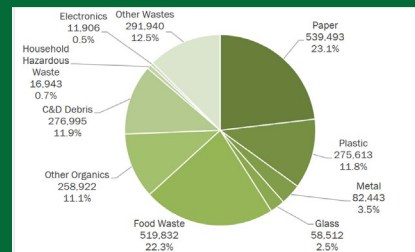
WHO WE ARE - OUR MISSION

Blue Earth Compost exists to expand the accessibility of composting in the communities we serve. To that end, Blue Earth Compost provides food scrap collections for homeowners, businesses, municipalities and events ensuring that these resources are recycled into soil and made into energy, rather than being landfilled or incinerated.



WHAT'S IN OUR WASTE?

Food waste makes up about 25% of the waste stream and over 33% of disposed material is compostable. However, only a small fraction of this heavy material is actually recycled.



WHAT WE'VE ACCOMPLISHED

Blue Earth Compost is the leading hauler of source separated organics in the state of CT. Our scalable model has succeeded thus far by focusing on growth, efficiency, and strategic partnership development with key stakeholders and the community.

NEWS // MIDDLETOWN

Middletown first in CT to turn restaurant food scrap into compost



Cassandra Day
July 14, 2021 | Updated: July 14, 2021 3:50 p.m.



CONNECTICUT

Connecticut throws away 520,000 tons of food every year. Hartford-based Blue Earth Compost hopes to change that.

By GREGORY B. HLADY
HARTFORD COURANT | MAR 26, 2019 AT 11:40 AM



Connecticut is struggling to deal with a host of garbage problems, but a Hartford-based recycling company, Blue Earth Compost, is looking to rapidly expand its operations to help solve at least a portion of this state's massive food waste dilemma.



Connecticut Unveils its First Commercial Food Scrap Collection Truck

Hartford, Conn.-based Blue Earth Compost paves the way for Connecticut's growing food waste revolution.

Waste360 Staff | Apr 02, 2019

CUSTOMERS

Commercial: 250+ Locations

Residential: 1,500+ Households

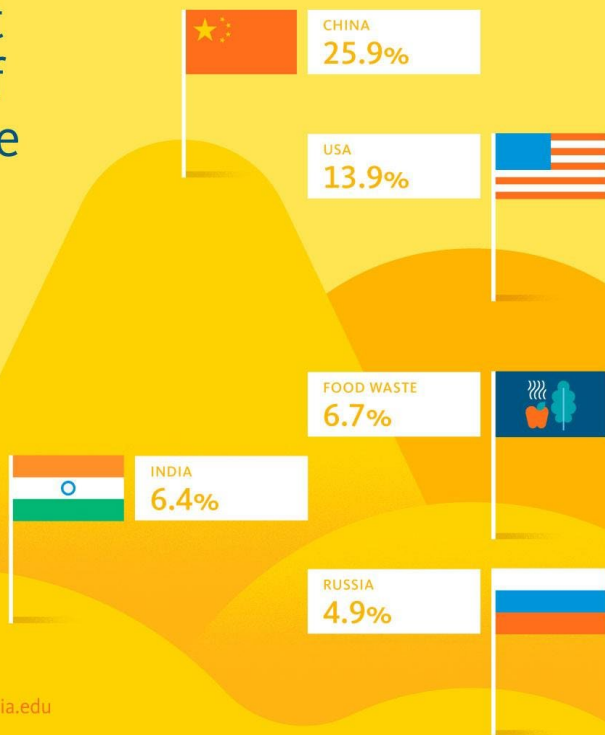
**Stanley
Black &
Decker**



WHAT WE'VE ACCOMPLISHED - ENVIRONMENT

The largest emitters of greenhouse gases

Percent of global greenhouse gas emissions*



Learn more at climate.universityofcalifornia.edu

UNIVERSITY
OF
CALIFORNIA

*Based on UN FAO Food Waste Footprint (2013) and WRI 2013 country-level emissions. Presented for scale; all countries contribute to food waste.

Blue Earth Compost has collected

21,965,943 POUNDS OF WASTE

mitigating CO₂ emissions equivalent to



12.3M
pounds of
carbon dioxide



627K
gallons of
gasoline burned



678M
smartphones
charged



92K
seedlings
planted



2.8M
kWh energy
created



14M
miles driven by
an average car

Compost services powered by



LOGISTICS

CAPACITY

- Carts, dumpsters, & pallets
- 1-2x weekly or on-call
- Cleaning services
- Meat and dairy accepted

CUSTOMER SERVICE

- Bilingual signage
- Training
- Responsive & Reliable customer service

REPORTING & MARKETING

- Weight Reporting
- Sustainability Metrics
- Window clings & graphics
- Social media posts



SERVICE TERRITORY



Connecticut
& Western
Massachusetts

OUR OFFICE

18 Midland Street
Hartford, CT 06120

WHERE DOES IT GO?

Quantum BioPower

- 100 tons/day
- 1.2 MW power
- SSO & packaged waste
- 1,000s of yards of compost



OTHER FACILITIES

VANGUARD
RENEWABLES
Agawam, MA

360
RECYCLING
Westfield, MA

SCRRA
COMPOST SITE
Stonington, CT

NEW MILFORD
FARMS
New Milford,
CT

THE BENEFITS - WHY DIVERT FOOD WASTE?

ENVIRONMENT

- Soil is a climate change solution
- Landfills and incinerators pollute
- Compost is better than petroleum fertilizers

ECONOMY

- Food scraps have a lower tip fee than MSW
- In a food related business it is the largest waste stream
- Cost savings for areas of density or large generators

COMMUNITY

- Decreases a major source of local pollution
- Improves public health
- Composting creates 3x more jobs than MSW



OUR IMPACT



22 million
pounds
composted



627,000
gallons of gas
not burned



6,150 tons of
CO₂
mitigated

PRICING

When we throw food in the trash we pay to turn it into pollution.
Work with Blue Earth to turn your food scraps into regeneration.



WE'RE HERE TO HELP

We want to see you succeed!

Feel free to reach out with questions or for consultation about our services, equipment considerations, or anything else.

Contact Info:
(office) - (860) 266-7346
(cell) - (413) 824-6504
sam@blueearthcompost.com

More info:
www.blueearthcompost.com

