

Jennifer A. Heaton-Jones, Executive Director  
Housatonic Resources Recovery Authority

**NAUGATUCK VALLEY COUNCIL OF GOVERNMENTS – July 13, 2022**  
**Connecticut's Waste Crisis: Challenges & Opportunities for Businesses**



# Connecticut's Waste Crisis



# Setting the course and deciding on a direction



# **The unwanted & discarded...**

**The waste stream is  
a complex system of  
generators, transporters,  
transfer stations,  
processors and  
disposal facilities.**





**Solid waste management is a universal issue**

**Do businesses worry  
where their waste will go  
or just when will it go?**





# Waste & Recycling Challenges



**Limited In-State  
Disposal Capacity**

**Hartford WTE Plant Closure**



**Choosing and partnering with the right Hauler**

The background of the slide is a photograph of a residential or commercial area with several large black and green trash bins. The bins are overflowing with trash, including black plastic bags, cardboard boxes, and various pieces of debris. The scene is set outdoors with trees and foliage in the background.

# Addressing Human Behavior & Bad Business Habits

**CRISIS**



**OPPORTUNITY**



# LINEAR ECONOMY

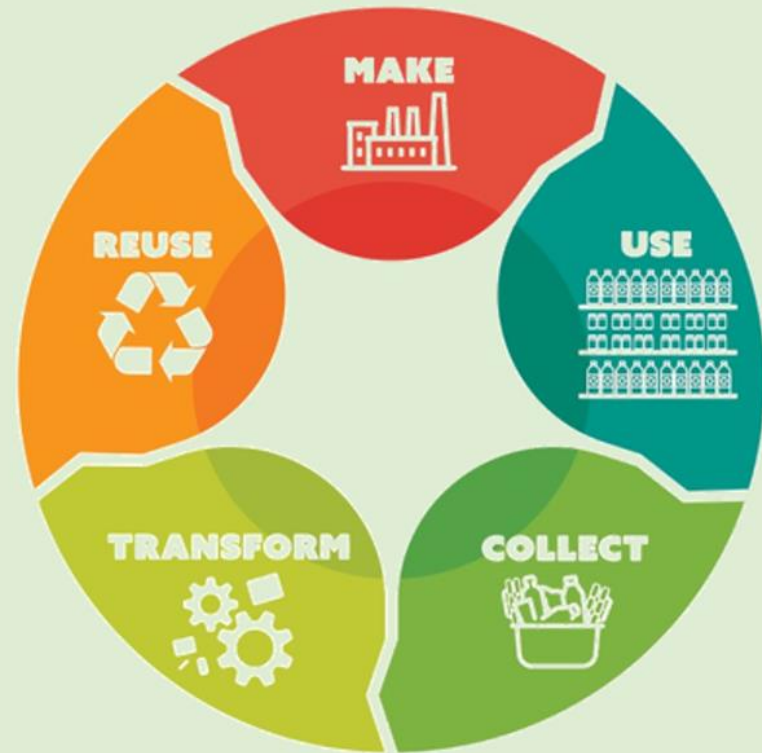
Materials in a **Linear Economy** create waste after use.



VS.

# CIRCULAR ECONOMY

Materials in a **Circular Economy** are collected and reused after each use.





**Waste Reduction** – Waste that never gets created and doesn't have waste management costs. Or...

Reducing the amount of materials entering the waste stream from a specific source by redesigning products or patterns of production or consumption (e.g., using returnable beverage containers). Synonymous with Source Reduction. *(EPA Glossary)*

***Source Reduction*** – *Reducing the amount of materials entering the waste stream from a specific source by redesigning products or patterns of production or consumption (e.g., using returnable beverage containers). Synonymous with waste reduction. (EPA Glossary)*

# Material Management Solutions

## Extended Producer Responsibility (EPR)

Paint, Mattresses, Thermostats, E-waste, Certain Gas Cylinders

## Source Separation Programs

Cardboard recycling

Organic Collection (*Local, easy and convenient*)

Bag bans (*change human behavior*)

Plastic Film Return to Retail (*System solutions*)

Deposit Systems (*Financial incentives*)

## Unit Base Pricing

Pay as you throw not one set fee

## Recycling Right

Reduces cost, increases value





**Think outside the box**



# Quantum BioPower - Southington, CT

## ANAEROBIC DIGESTION



# New England Compost - Danbury, CT

## WINDROW COMPOSTING



## ORGANICS RECYCLING CONTAINER (Food Scraps ONLY)

### IMPORTANT RULES:

- Organic waste **ONLY!**
- Compostable bags only - **NO Plastic bags!**
- **Do not** tie a knot in the compostable bags!
- No plastic items, stickers, rubber bands or twist ties!

**Municipal Onsite Composting- Ridgefield, CT**  
SOLAR POWERED ASP COMPOSTING





**It all starts with the generator**



WHY  
NOT  
START  
NOW



**Jennifer Heaton-Jones**

**203-312-1071**

**[Jennifer@hrra.org](mailto:Jennifer@hrra.org)**

**[www.HRRA.org](http://www.HRRA.org)**