

04/27/2021



Main Street Committee Meeting #5



EXPERIENCE | Transportation

Agenda

- ▶ Introduction
- ▶ Implementation Plan
- ▶ Transit Recommendation
- ▶ Next Steps

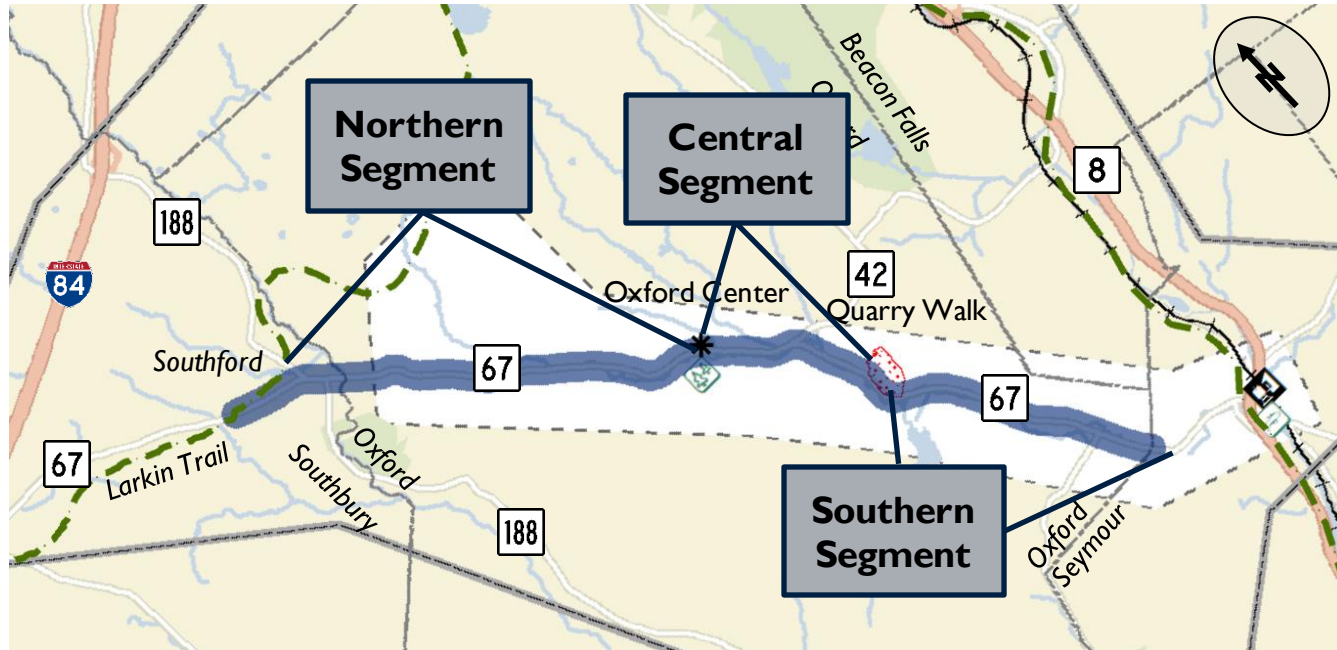


Study Recap

- ▶ Screening Results / Initial Findings
- ▶ CTDOT Review Meeting
- ▶ VTD Coordination
- ▶ Wrap-up:
 - Final Report
 - Concept Plans

3 Segments for Implementation

- Each broken into implementable projects



Typical Sections

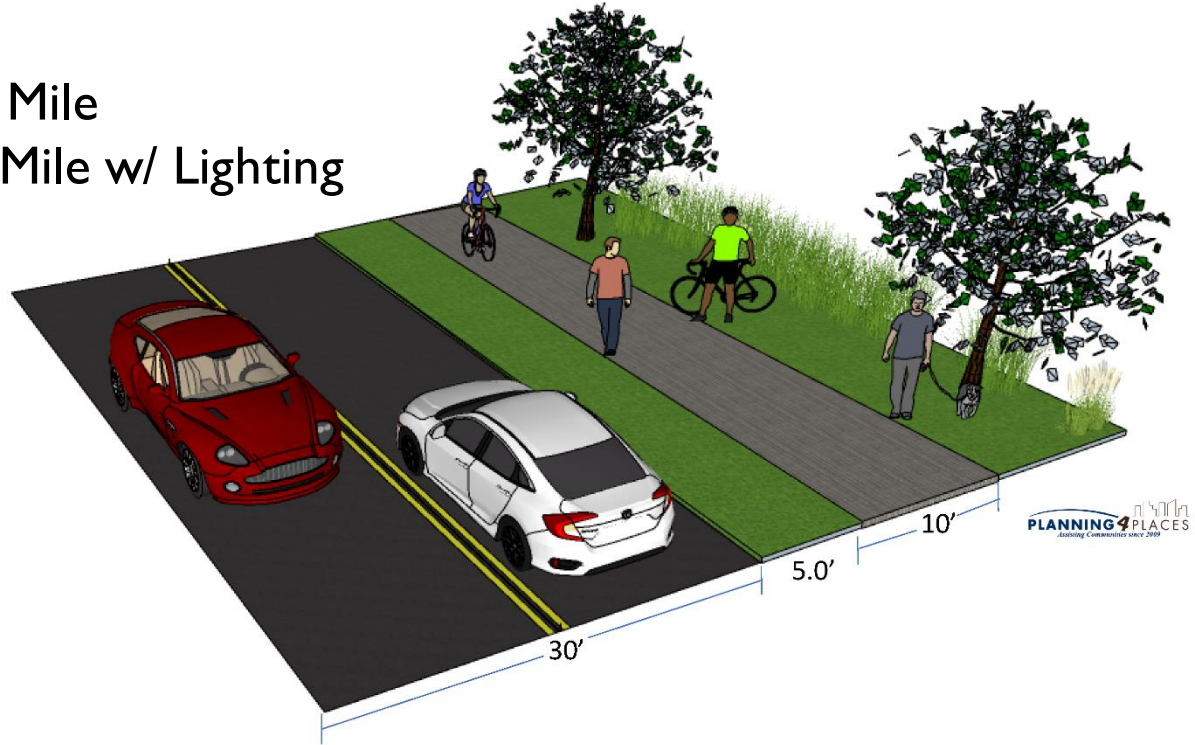
- ▶ All based on 10' Sidepath
- ▶ Preferred 5' minimum buffer
- ▶ Developed linear foot costs (with and without lighting)

Typical Sections

Normal Section

\$130 / LF = \$690K / Mile

\$220 / LF = \$1.2M / Mile w/ Lighting

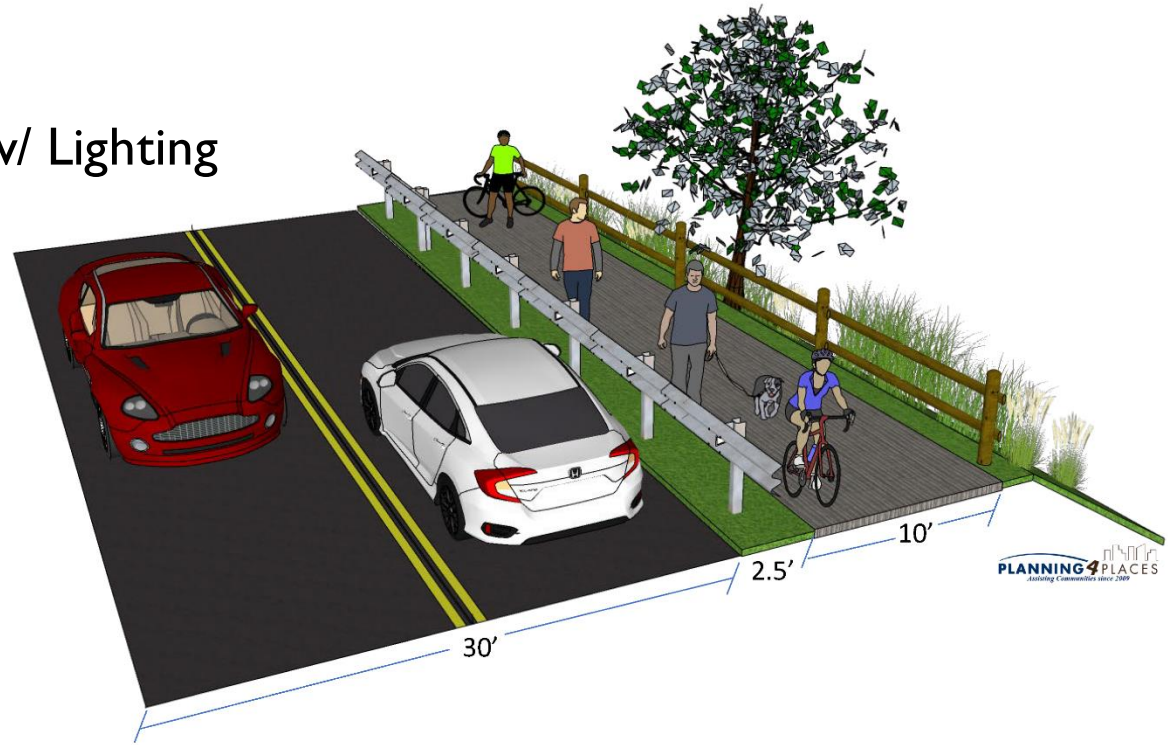


Typical Sections

Steep Slope

\$270 / LF = \$1.5 / Mile

\$360 / LF = \$2M / Mile w/ Lighting

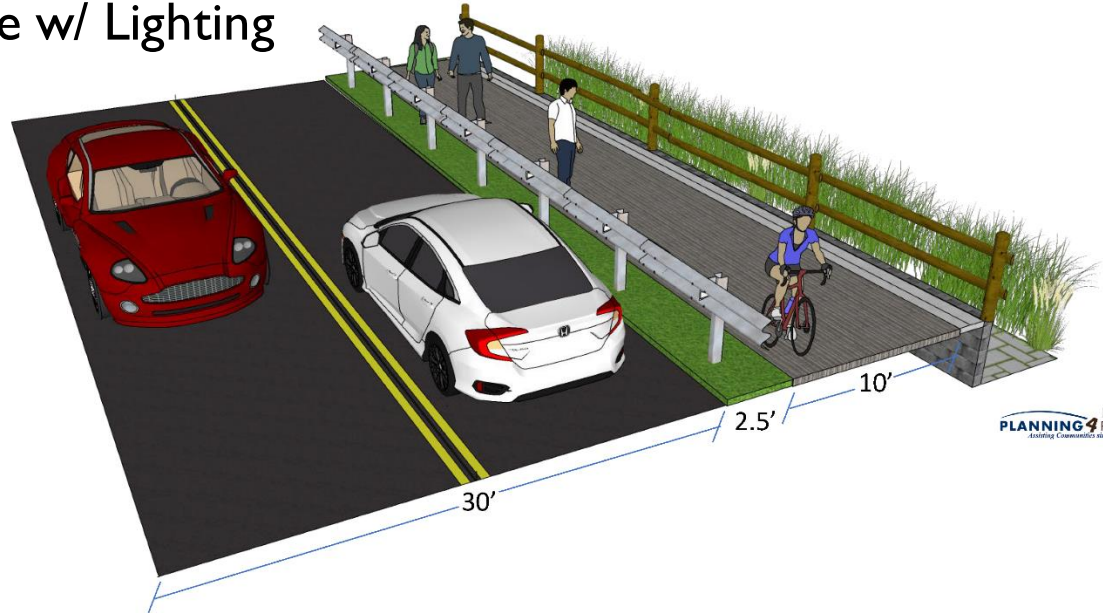


Typical Sections

Retaining Wall

\$1,850 / LF = \$10M / Mile

\$1,935 / LF = \$10.25M / Mile w/ Lighting



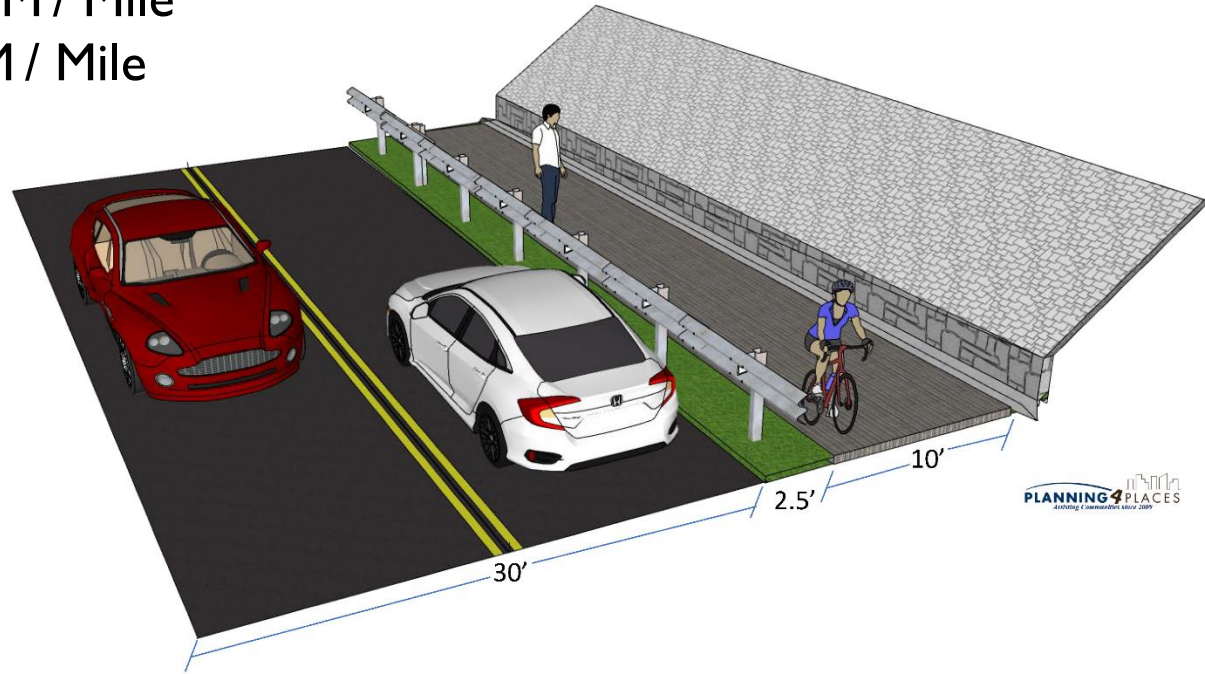
Typical Sections

Rock Cut

\$230 / LF = \$1.25M / Mile

\$250 / LF = \$1.7M / Mile

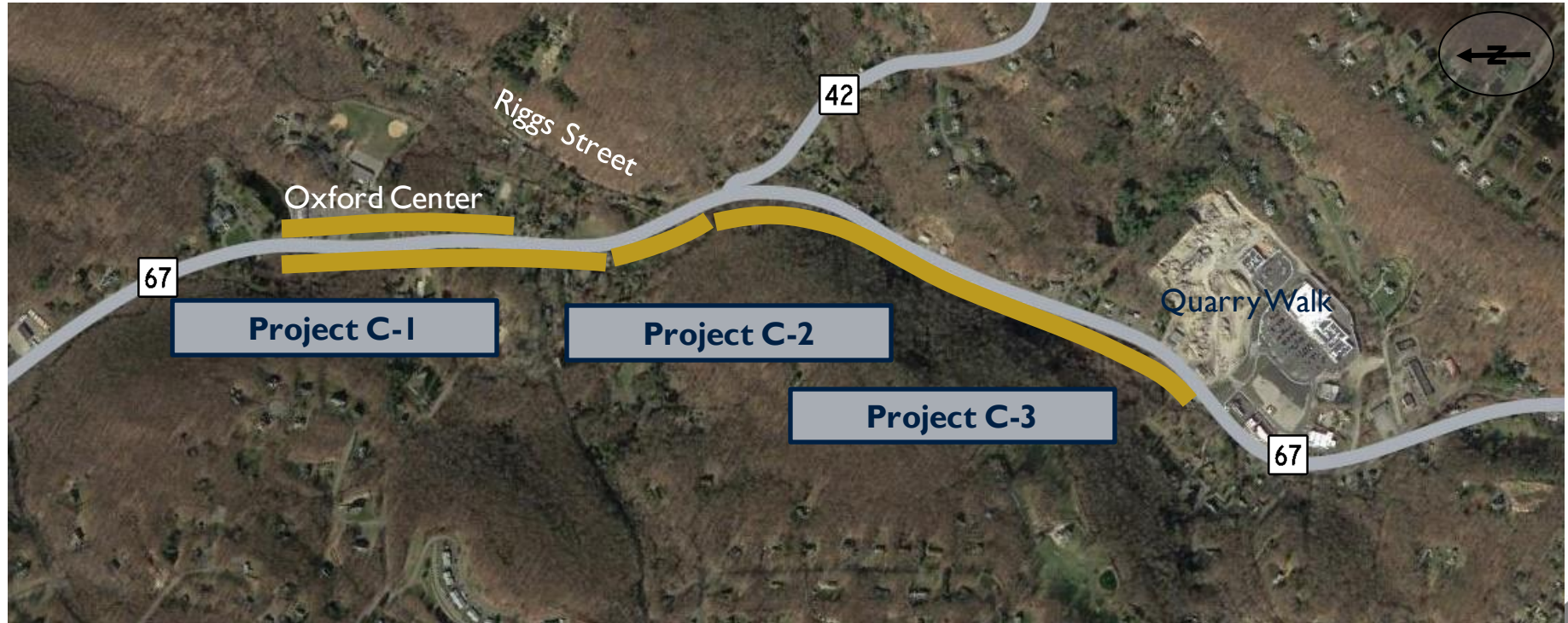
w/ Lighting



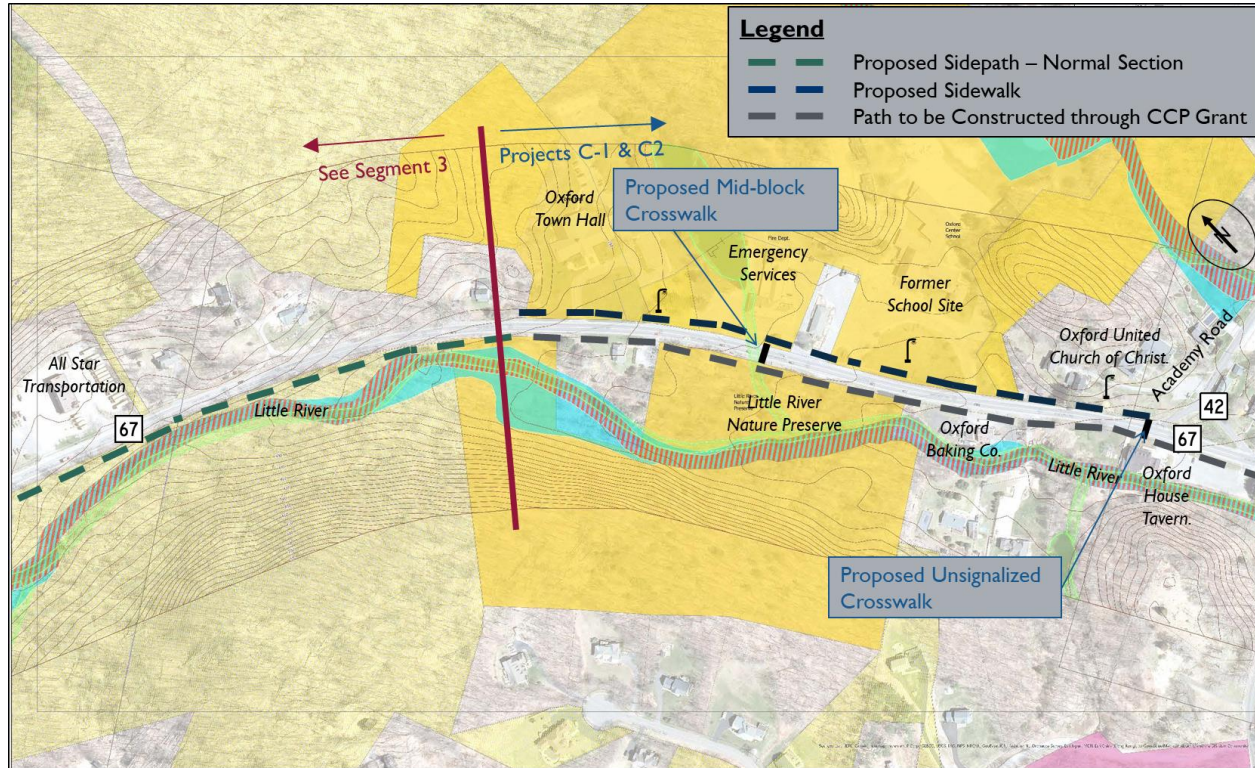
Central Segment

- ▶ Project 1 (Ongoing) – Town Hall to Dutton Road
- ▶ Project 2 – Sidewalk East side though Center /
Extend path to Riggs Street
- ▶ Project 3 – Riggs Street to Quarry Walk

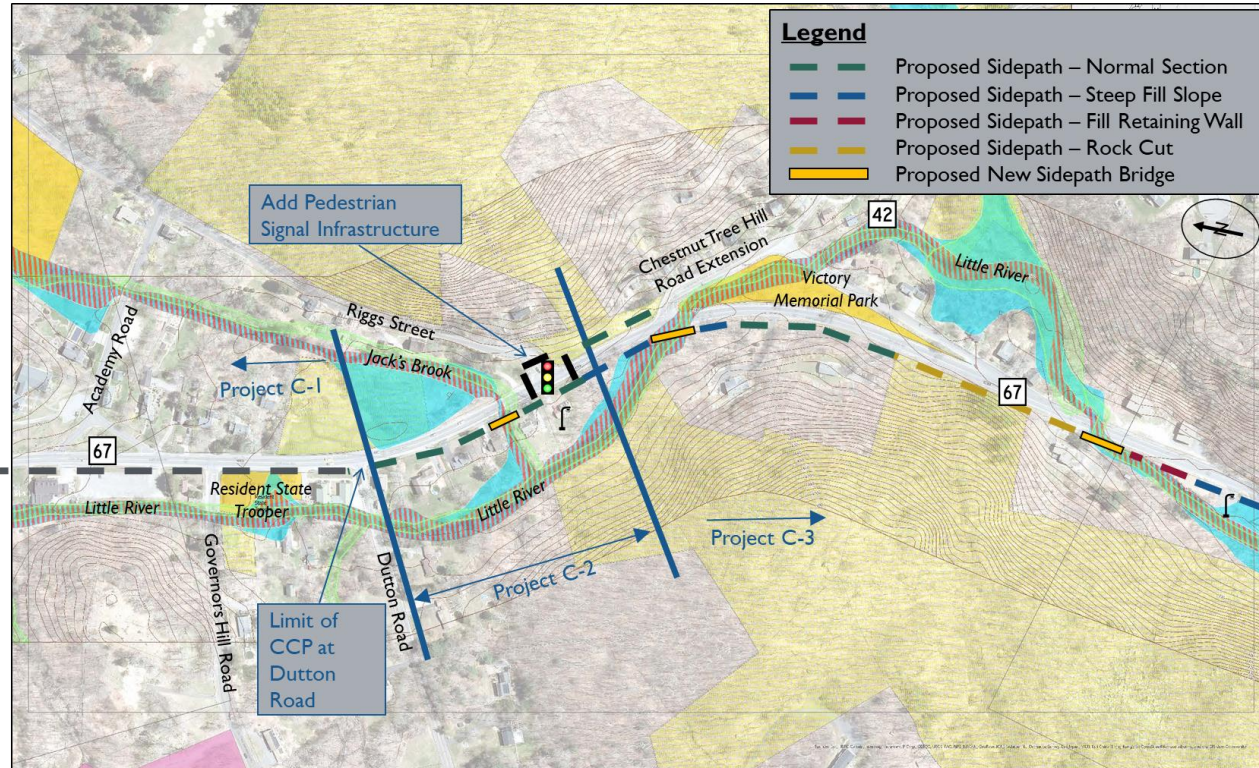
Central Segment



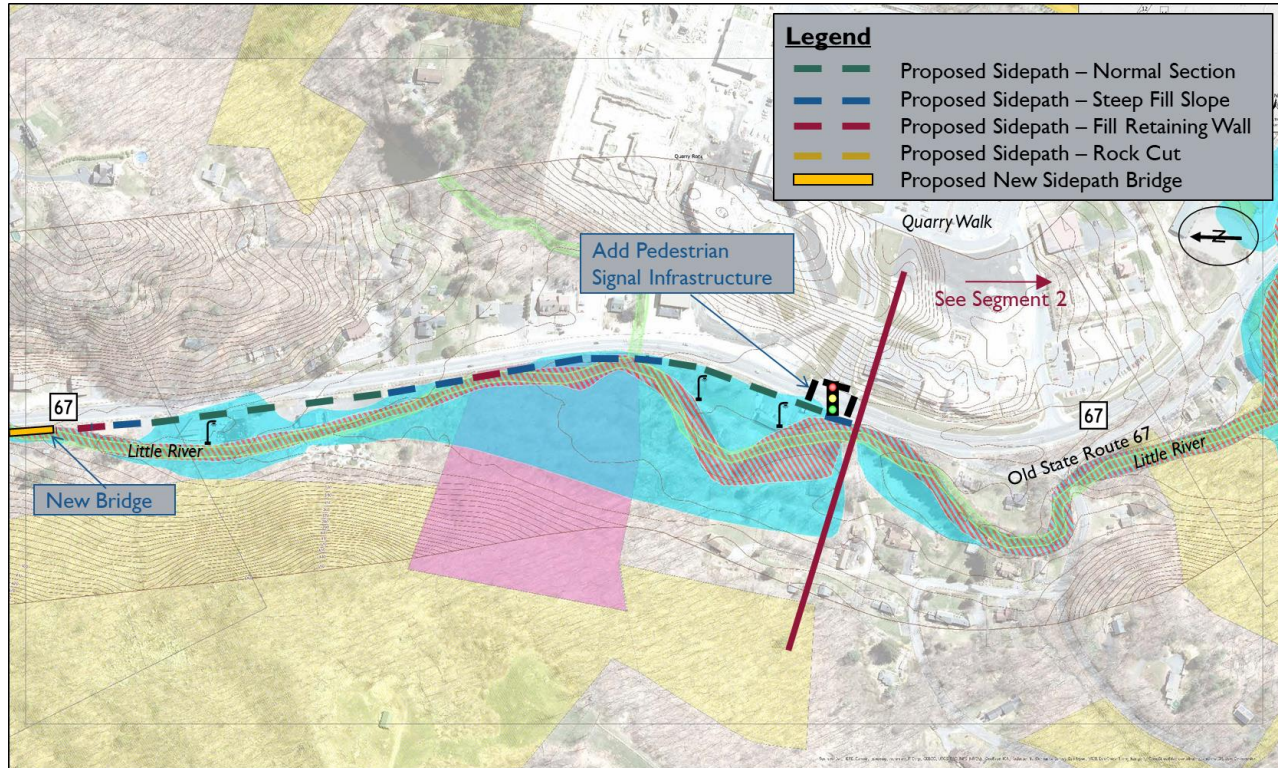
Central Segment



Central Segment



Central Segment



Southern Segment

- ▶ Project 1 – Quarry Walk to Park Road
- ▶ Project 2 – Park Road to Great Hill Road
- ▶ Project 3 – Great Hill Road to Sidewalk Network in Seymour
- ▶ Future Connection – Across Naugatuck River

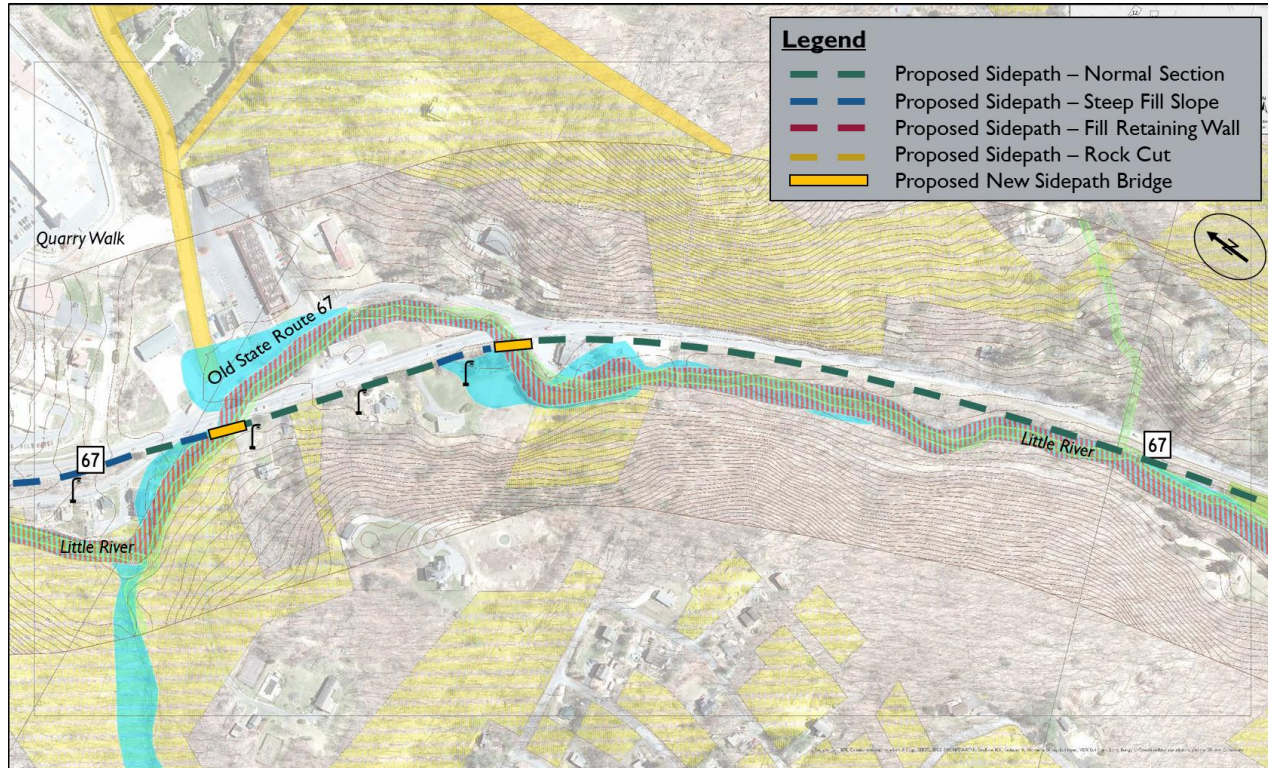
Southern Segment



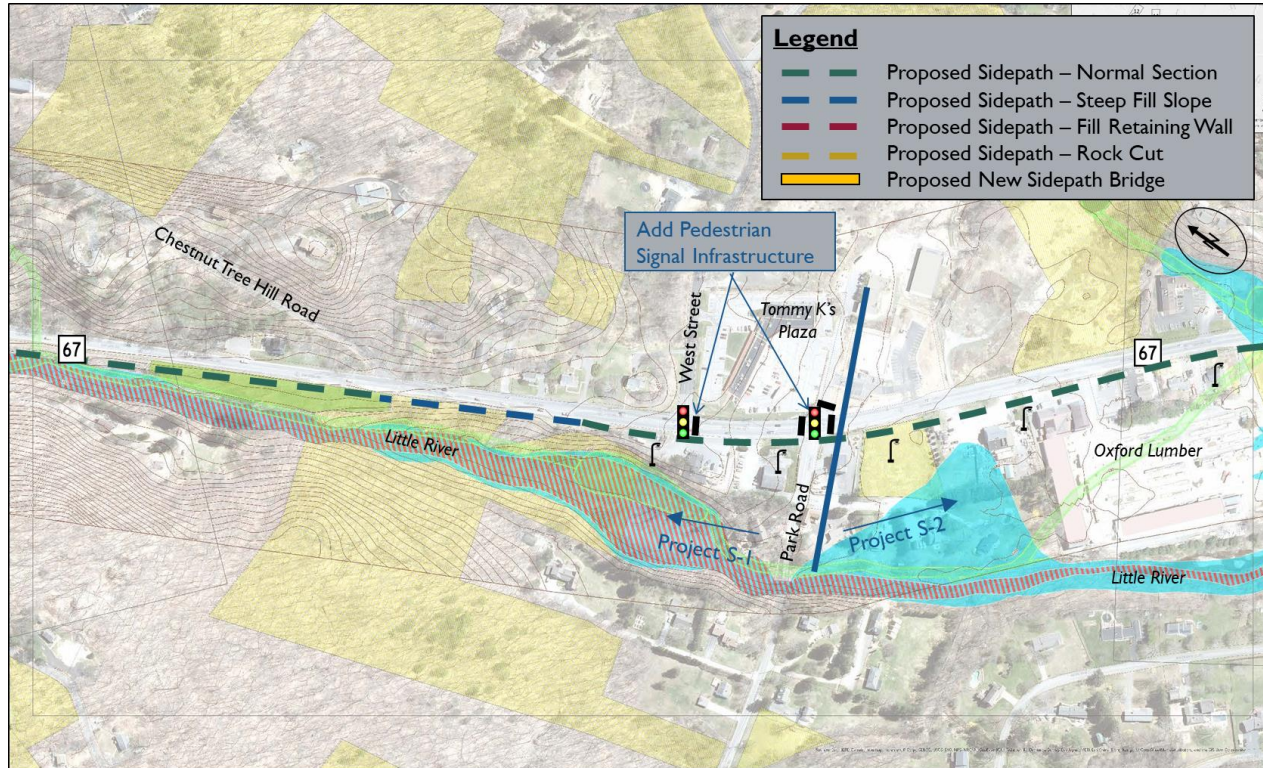
Legend

-
- Legend**
- Proposed Sidepath – Normal Section
 - Proposed Sidepath – Steep Fill Slope
 - Proposed Sidepath – Fill Retaining Wall
 - Proposed Sidepath – Rock Cut
 - Proposed New Sidepath Bridge
- Quarry Walk
- See Segment 1
- Project S-3
- 67
- Little River
- Old State Route 67
- Little River

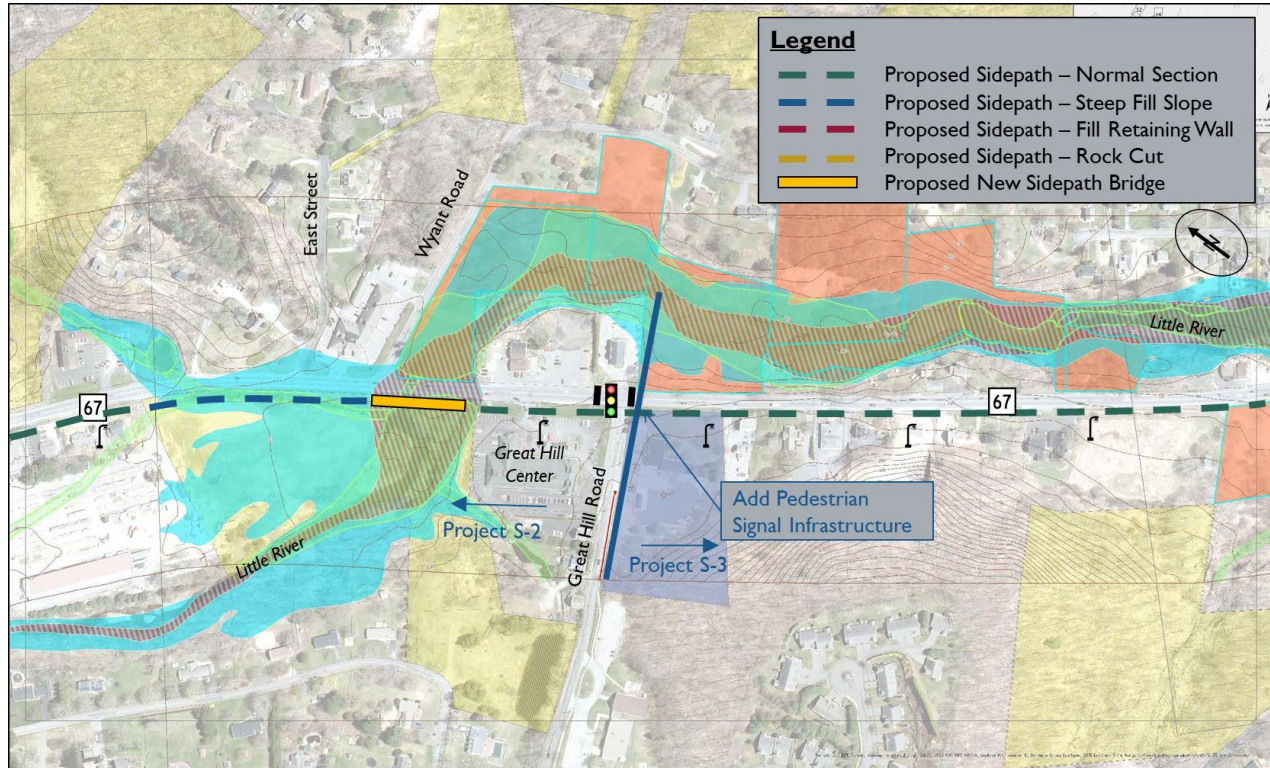
Southern Segment



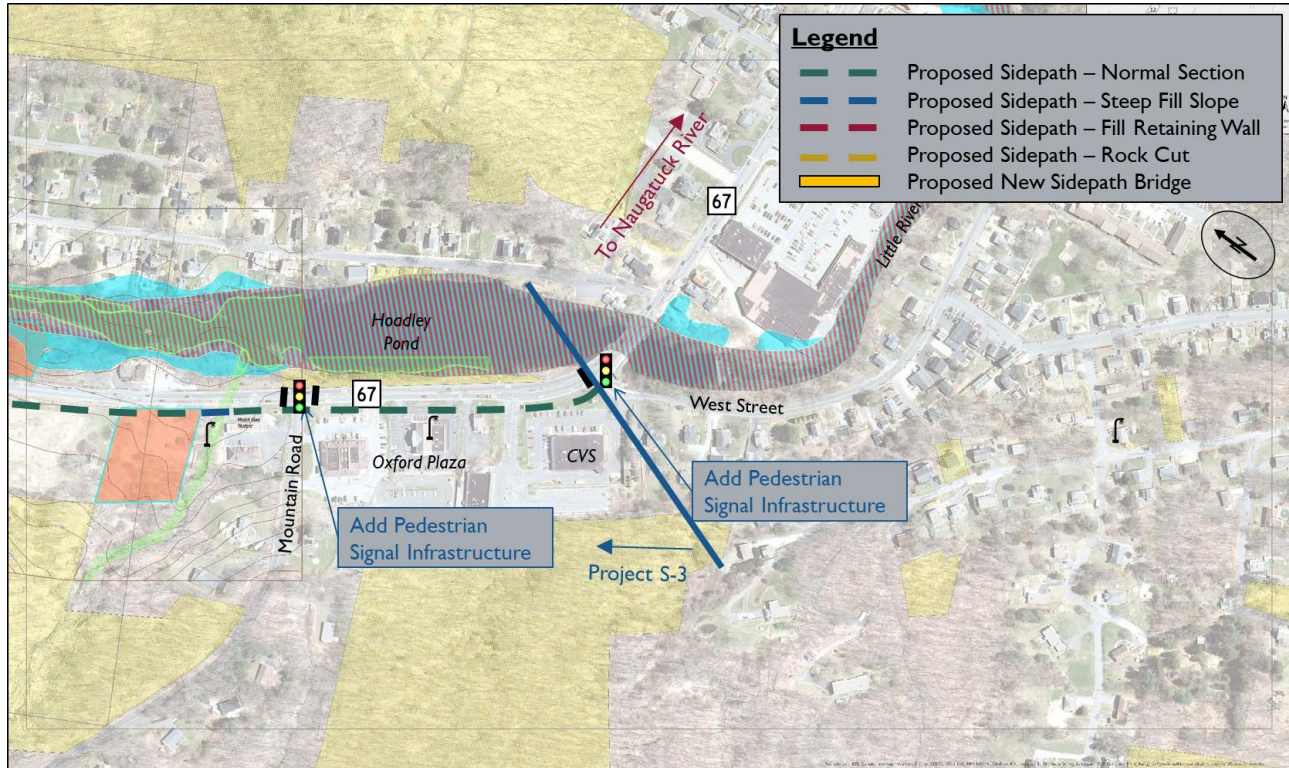
Southern Segment



Southern Segment



Southern Segment



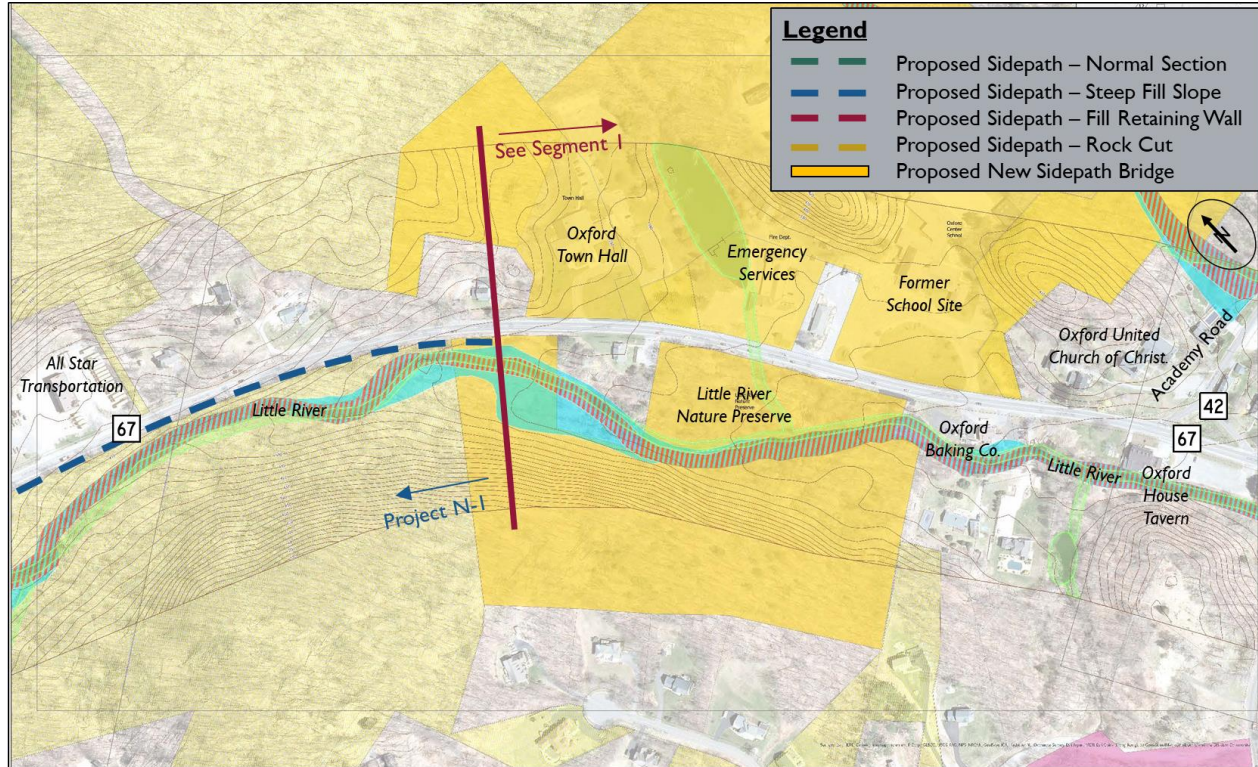
Northern Segment

- ▶ Project 1 – Oxford Center to Christian Street
- ▶ Project 2 – Christian Street to Hawley Road
- ▶ Project 3 – Hawley Road to Larkin State Park Trail

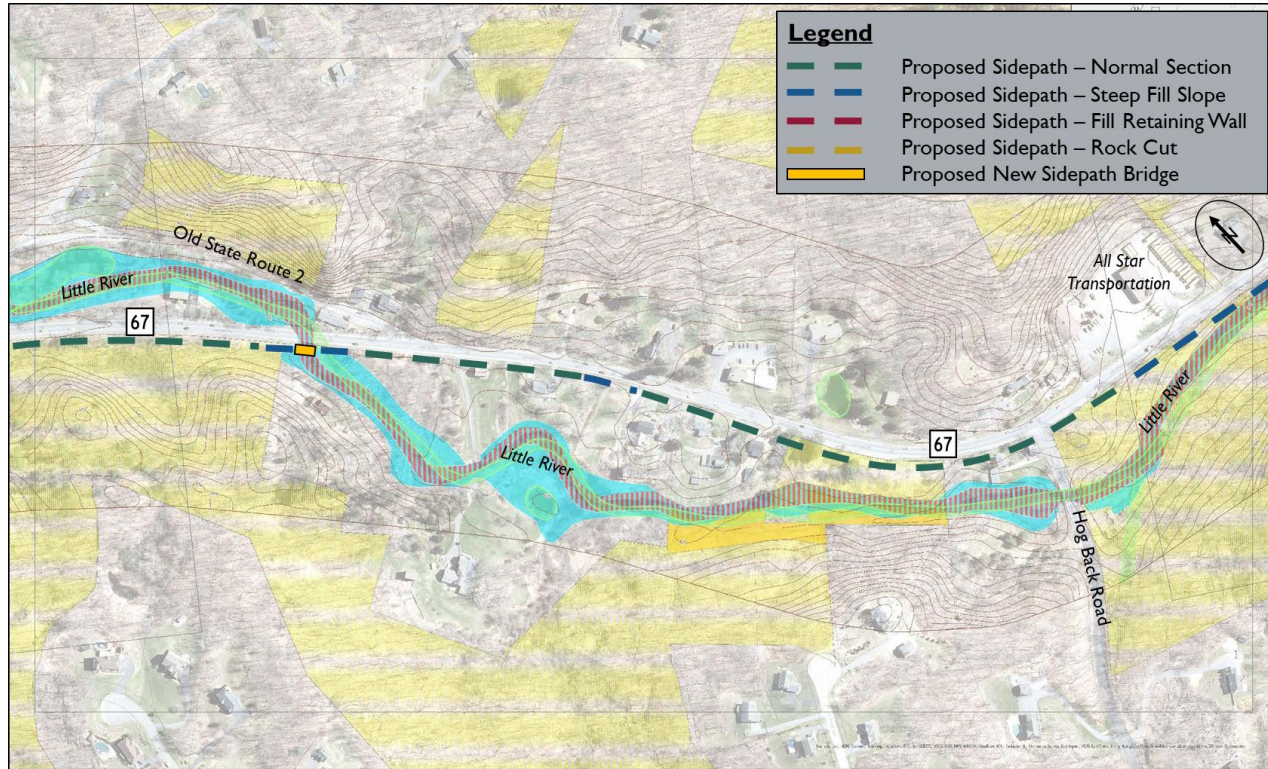
Northern Segment



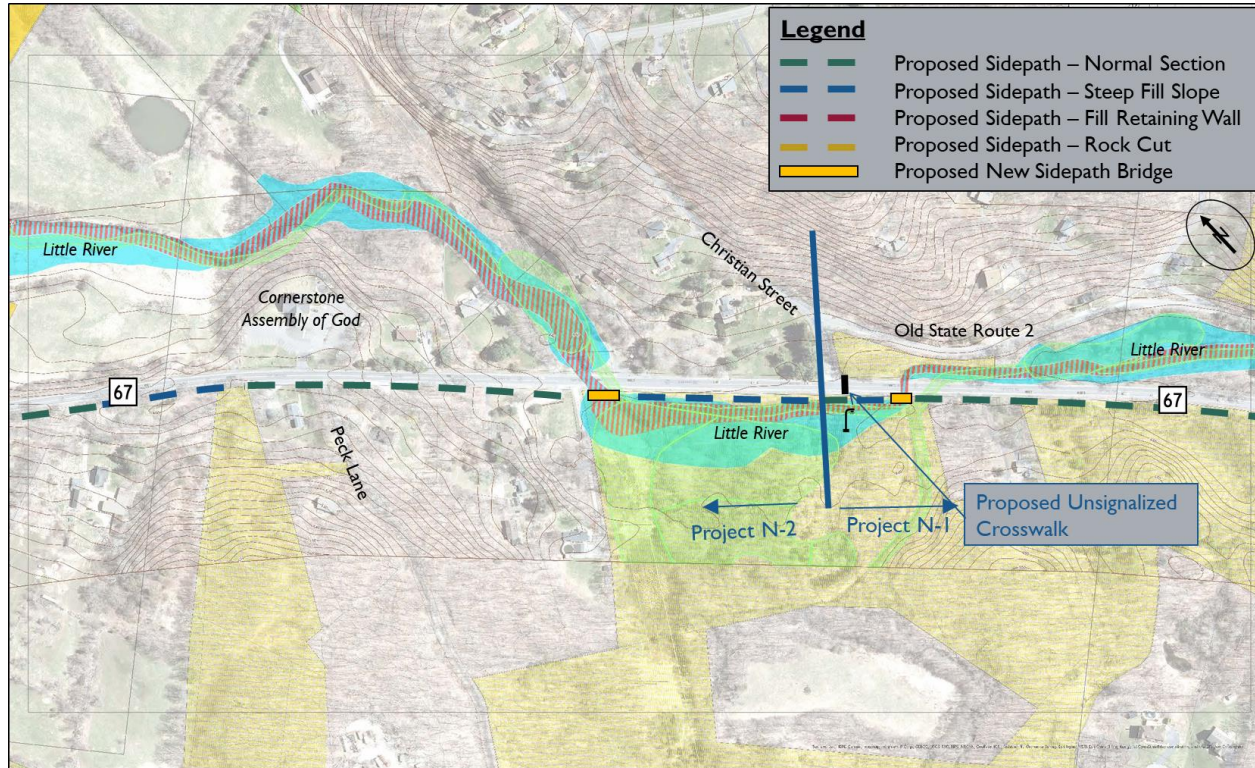
Northern Segment



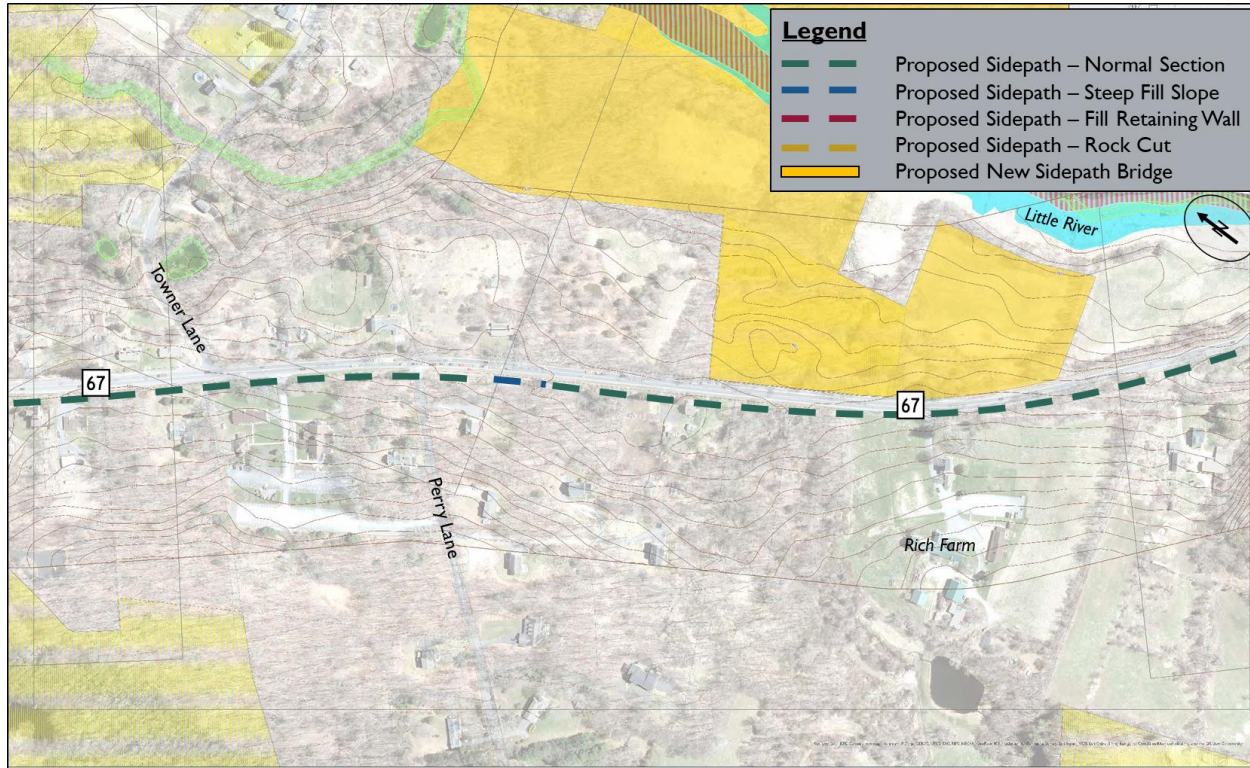
Northern Segment



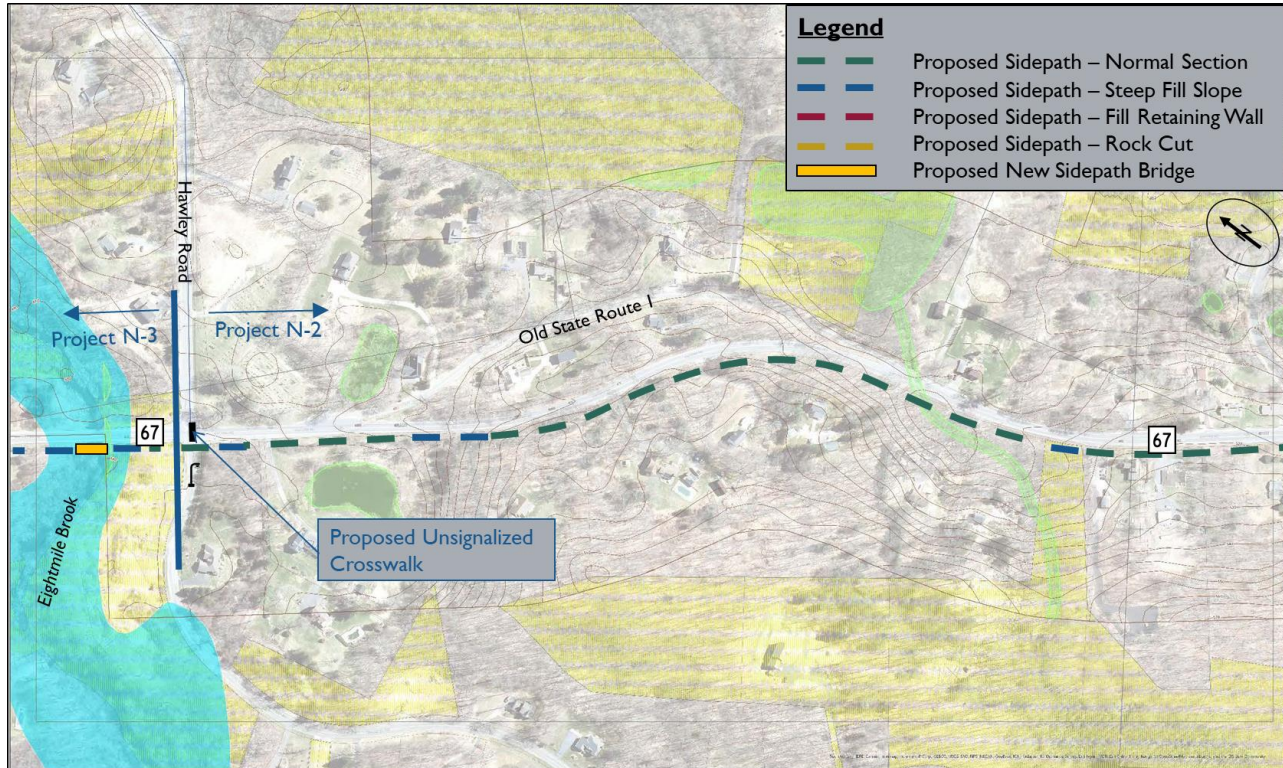
Northern Segment



Northern Segment



Northern Segment



Transit Recommendations

- ▶ Demand: 13,600 rides per yea
- ▶ Commuter demand too limited
- ▶ Recommended Option: Join VTD



Next steps

- ▶ Additional details / renderings
 - Crossing locations
 - Project termini
 - Wayfinding
- ▶ Finalize cost estimates
- ▶ Report / concept drawings
- ▶ Public Meeting
- ▶ Town Endorsement



Thank you for your time!

