

Welcome!



Thank you for taking the time to join us! Here are some ground rules for tonight's meeting:

- ▶ The meeting is being recorded
- ▶ All attendees will be muted upon entry and remain muted until Q&A
- ▶ There will be 2 Q&A periods – please ask your question by:
 - Entering it into the chat
 - ‘Raising your hand’
- ▶ Presentation will start at 7:05 PM

10/8/2020



Public Information Meeting #1



EXPERIENCE | Transportation

Route 67 Transportation Alternatives

- ▶ Existing Conditions Analysis
- ▶ Trail Routing
- ▶ Transit Options
- ▶ Next Steps



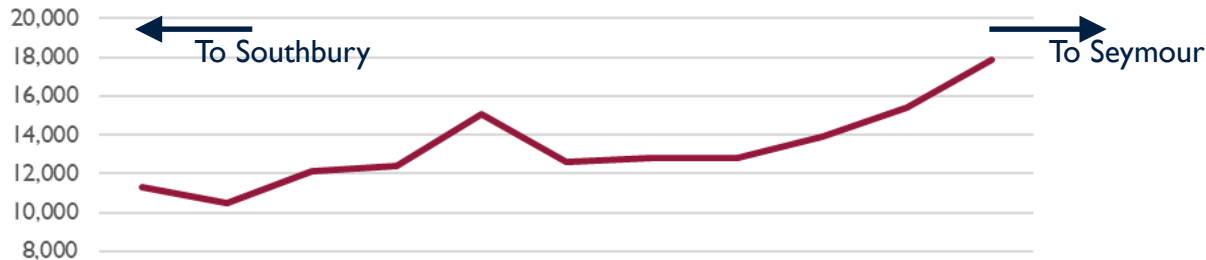
Existing Conditions Analysis

► Route 67

- Traffic volumes
- Travel speeds
- Crashes

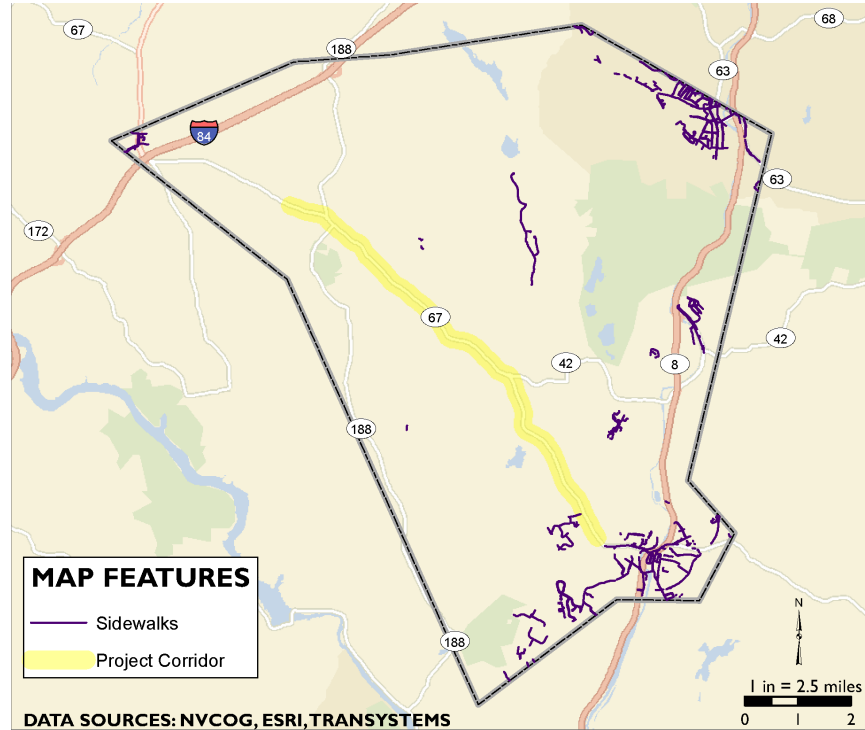


ADT Through the Corridor



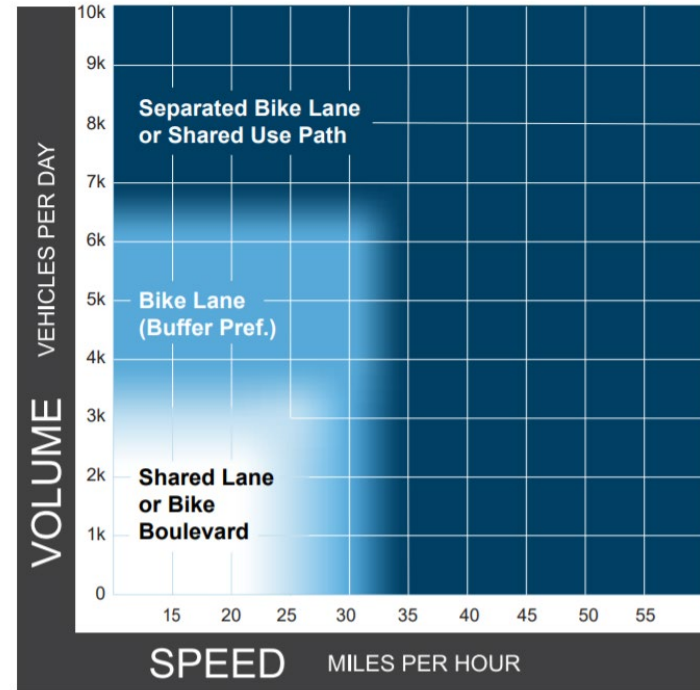
Sidewalks

- ▶ Lack of pedestrian infrastructure
- ▶ Creates difficult environment



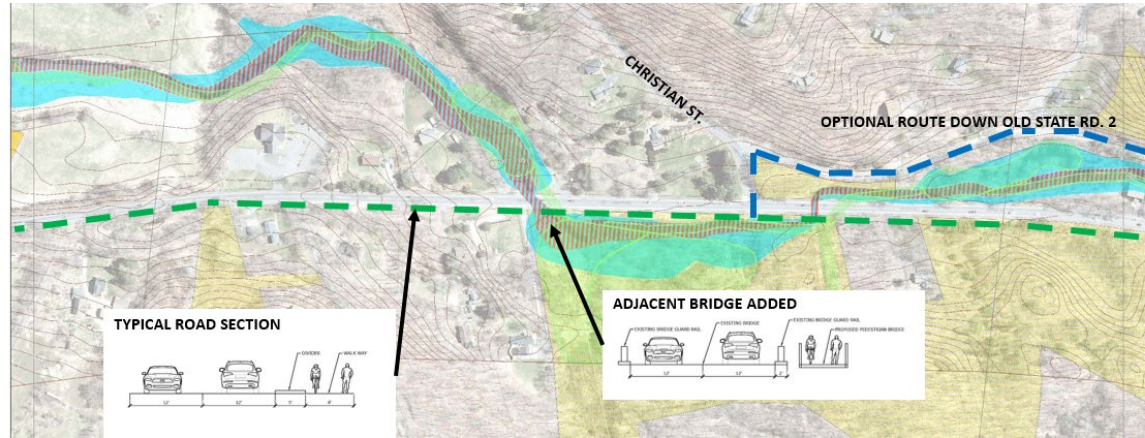
Bicycling

- ▶ High volumes and speeds
- ▶ Shoulder (if sufficiently wide) would be used by confident cyclists only

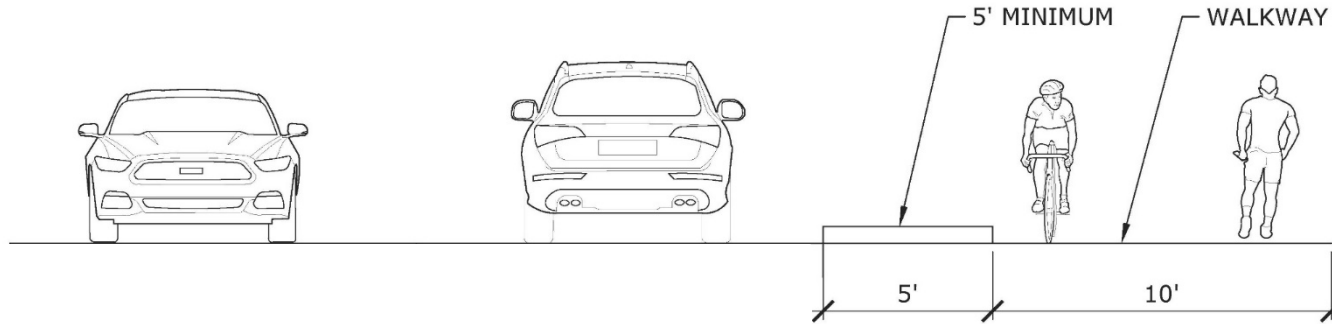


Initial Routing Thoughts

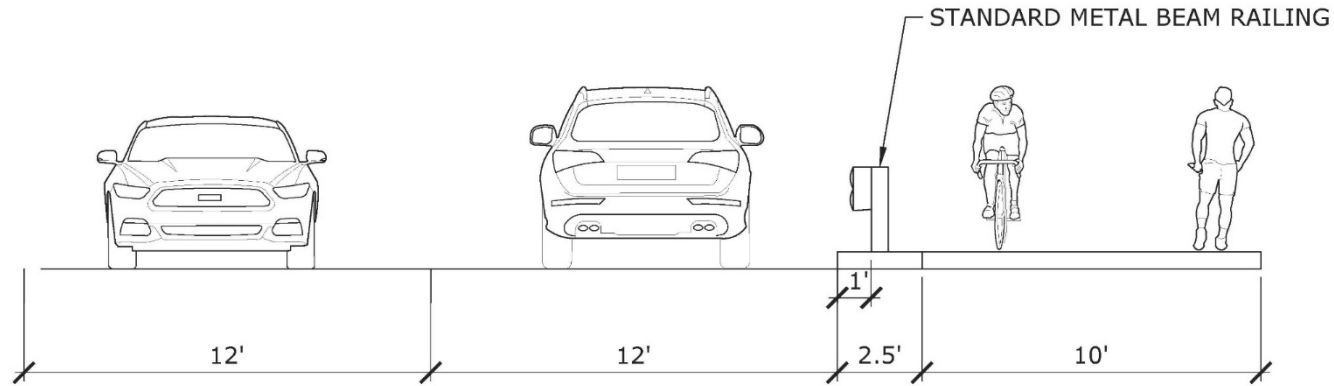
- ▶ Evaluated environmental / physical constraints
- ▶ Identified key connections
- ▶ Due to ROW / permitting, most feasible route along Route 67



Potential Trail Typical Sections



Potential Trail Typical Sections

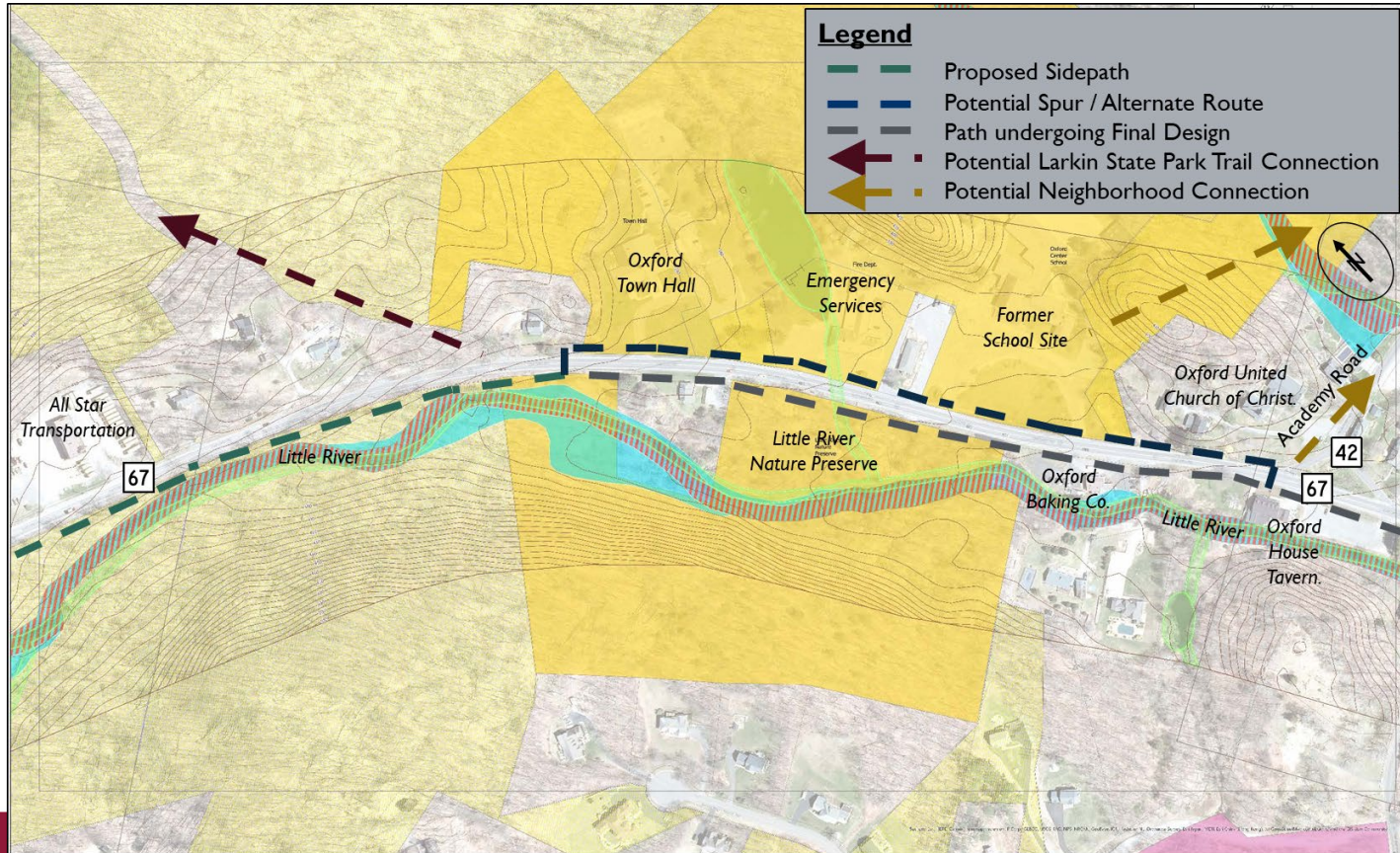


Oxford Center to Quarry Walk

- ▶ Walkable environment in Oxford Center
- ▶ Neighborhood connectivity
- ▶ Commercial destinations
- ▶ River and recreational resources



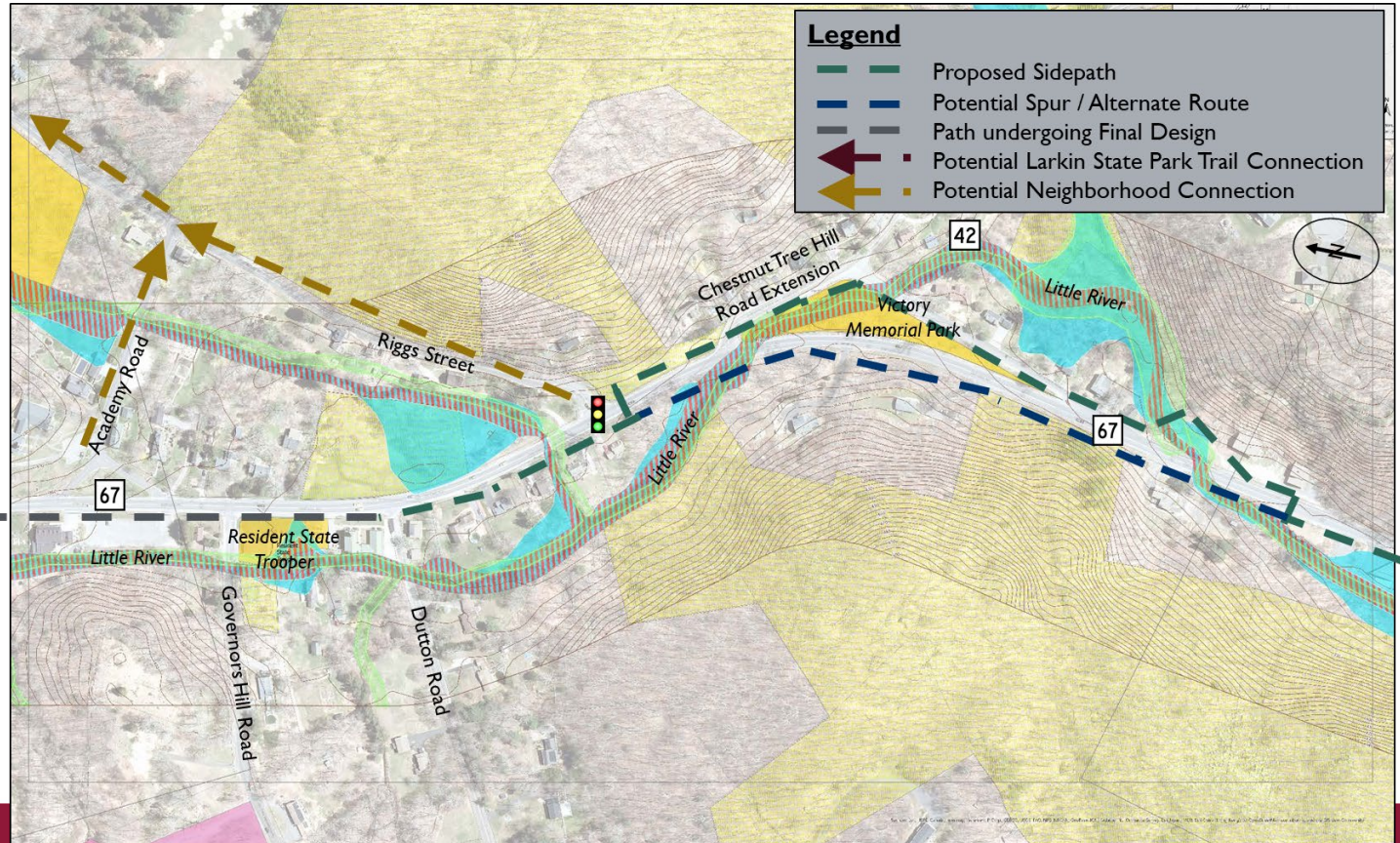
Oxford Center to Quarry Walk



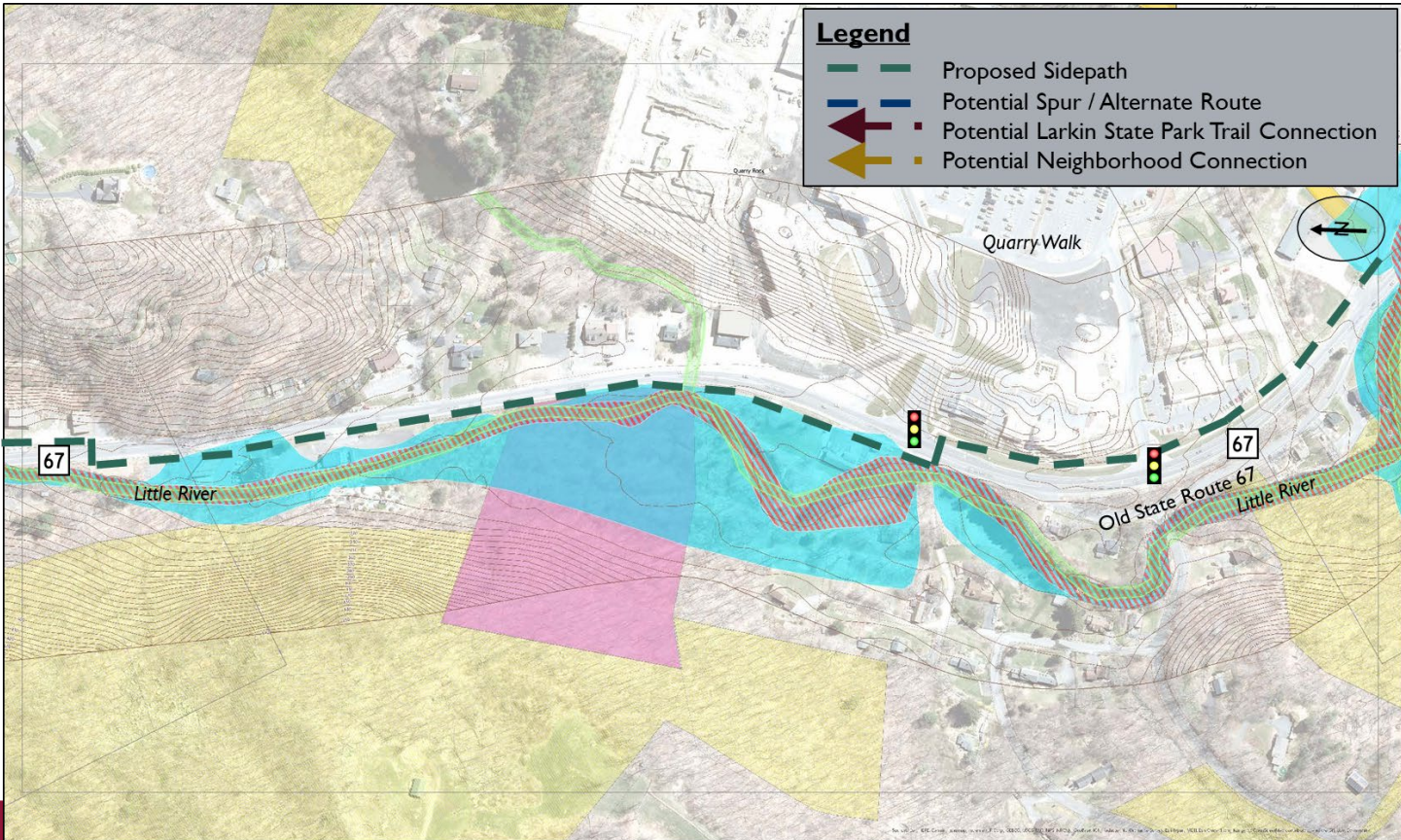
Oxford Center to Quarry Walk



Oxford Center to Quarry Walk



Oxford Center to Quarry Walk



Oxford Center to Quarry Walk

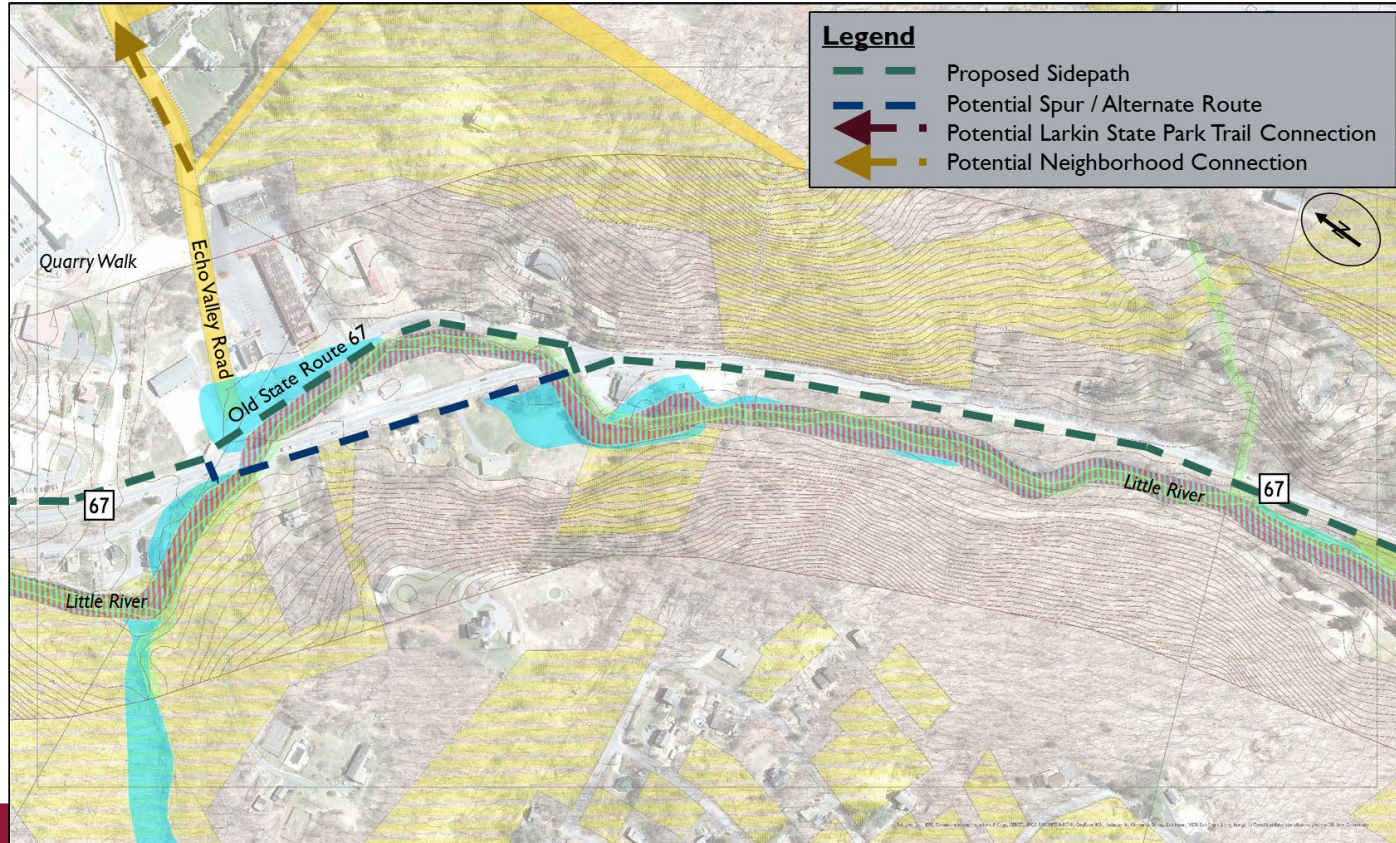


Quarry Walk to Seymour

- ▶ Neighborhood connections
- ▶ Commercial density
- ▶ Recreational destination
- ▶ Continue to downtown Seymour / Tingue Dam / NRG



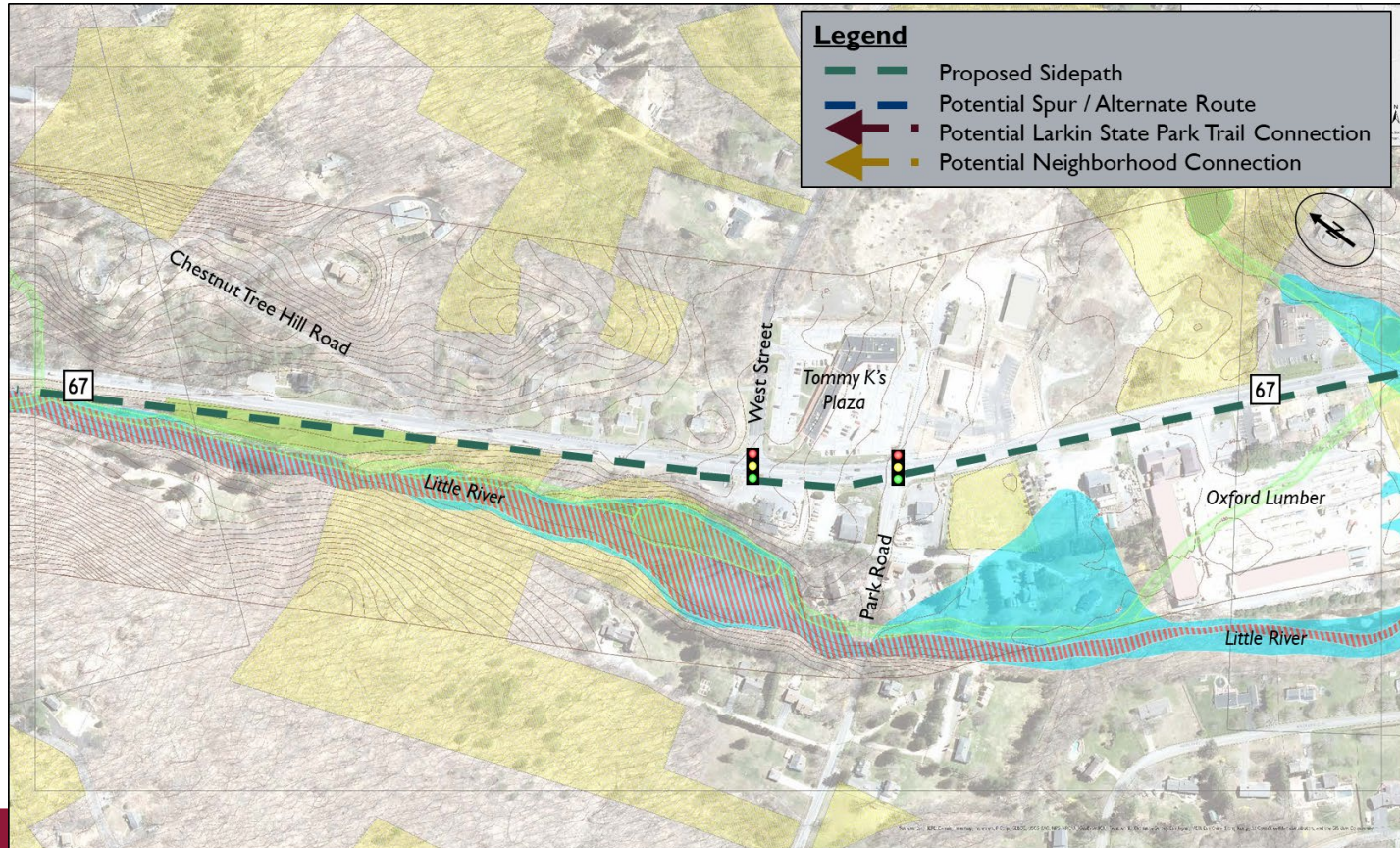
Quarry Walk to Seymour



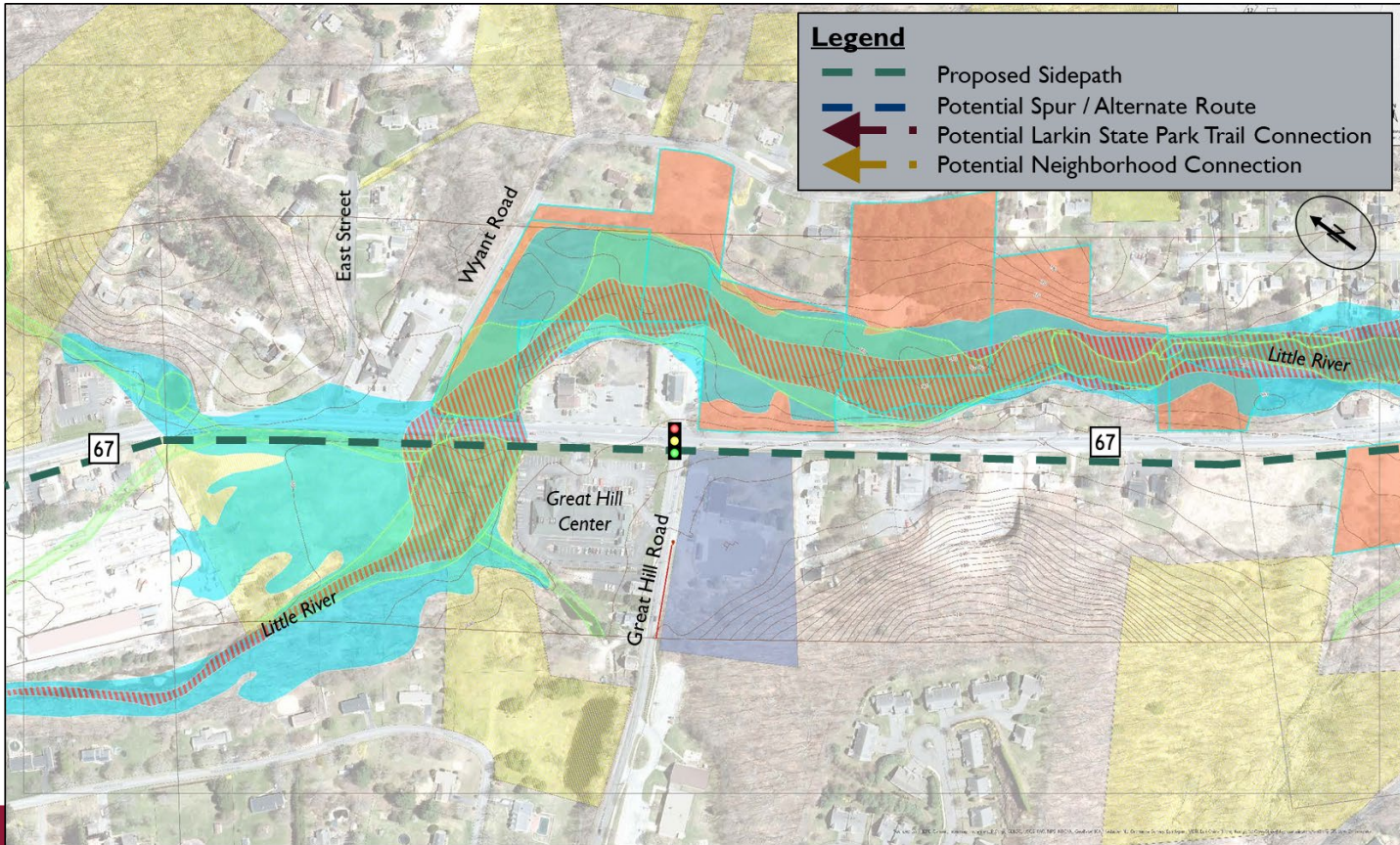
Quarry Walk to Seymour



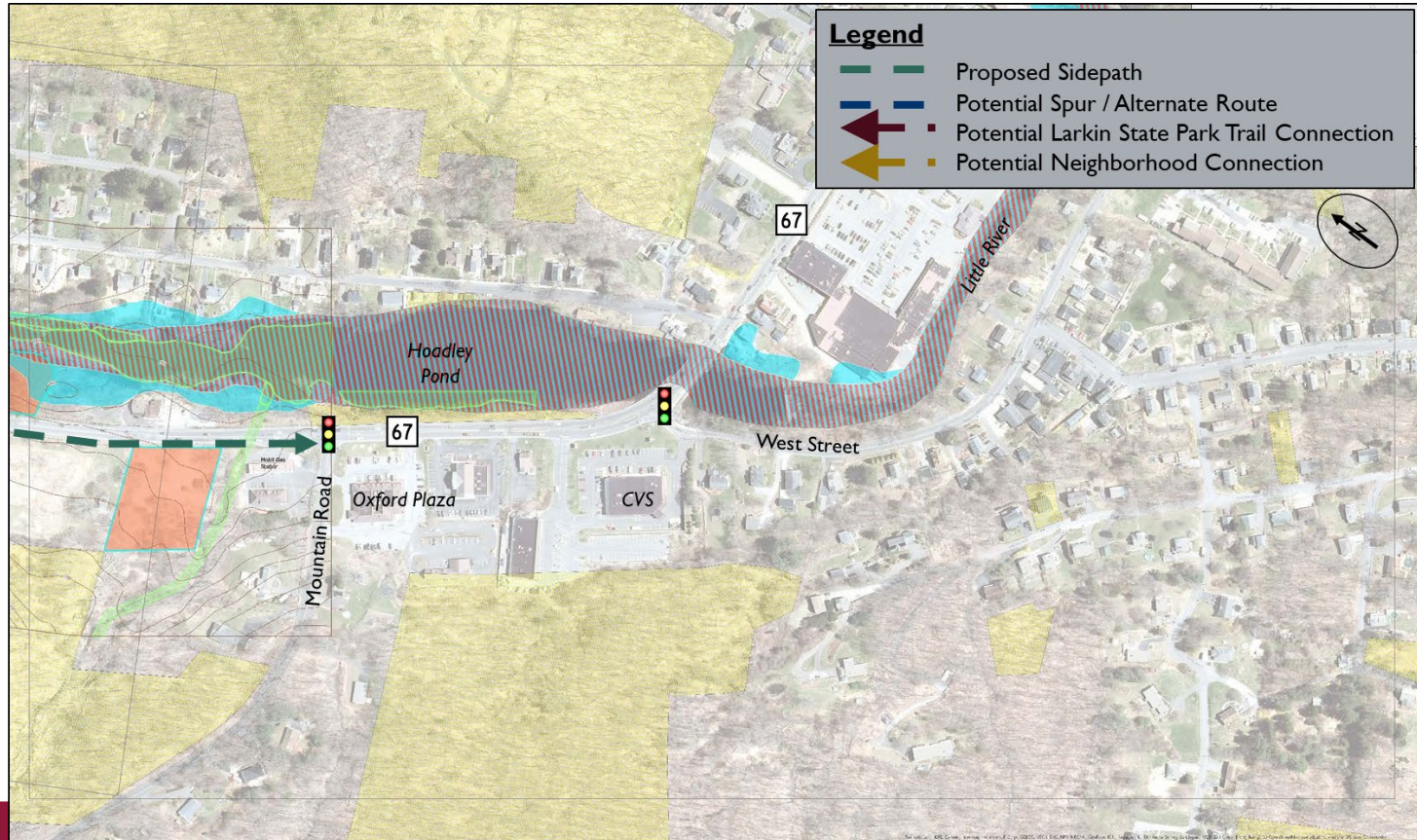
Quarry Walk to Seymour



Quarry Walk to Seymour



Quarry Walk to Seymour

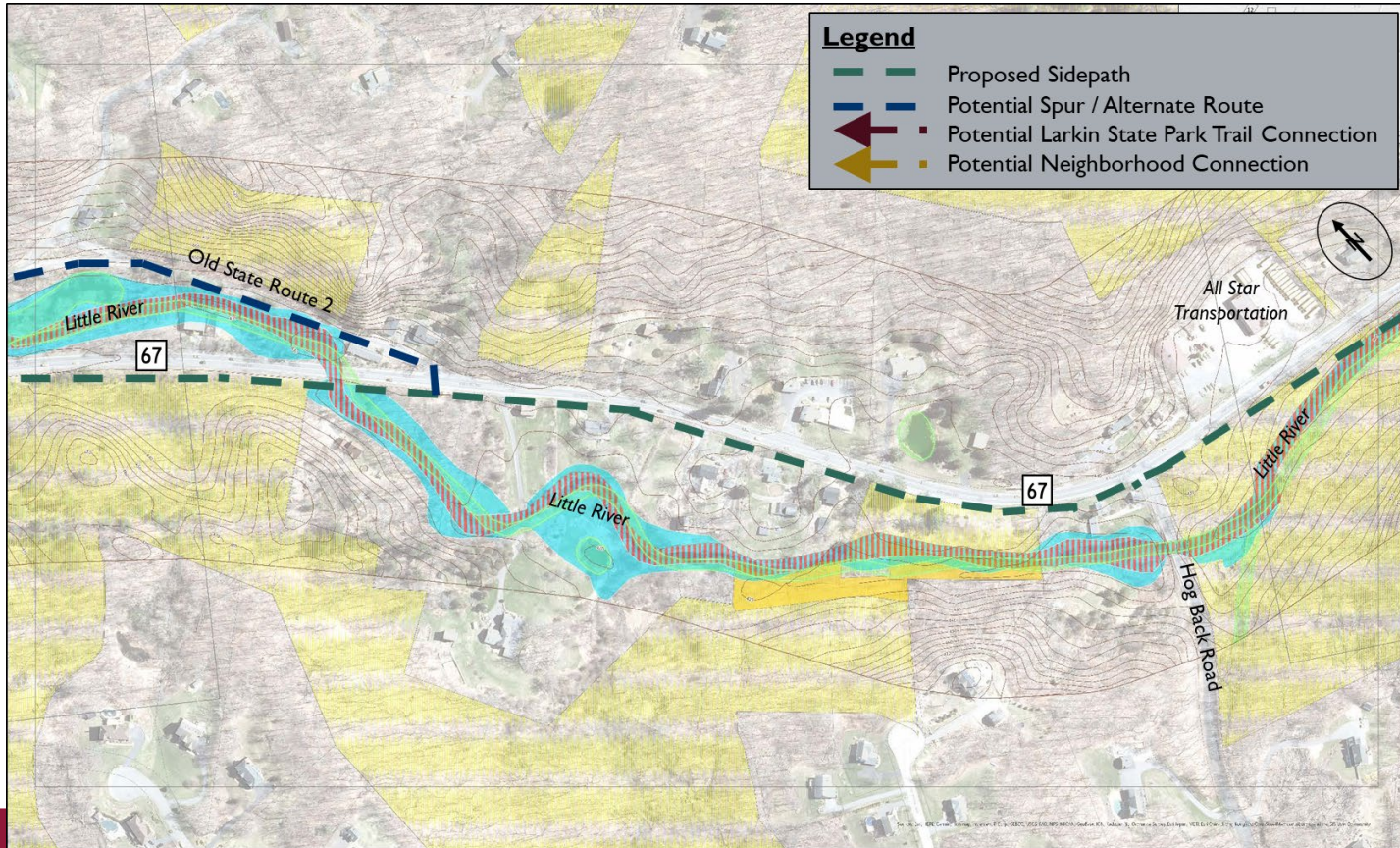


Oxford Center to Southbury / Larkin

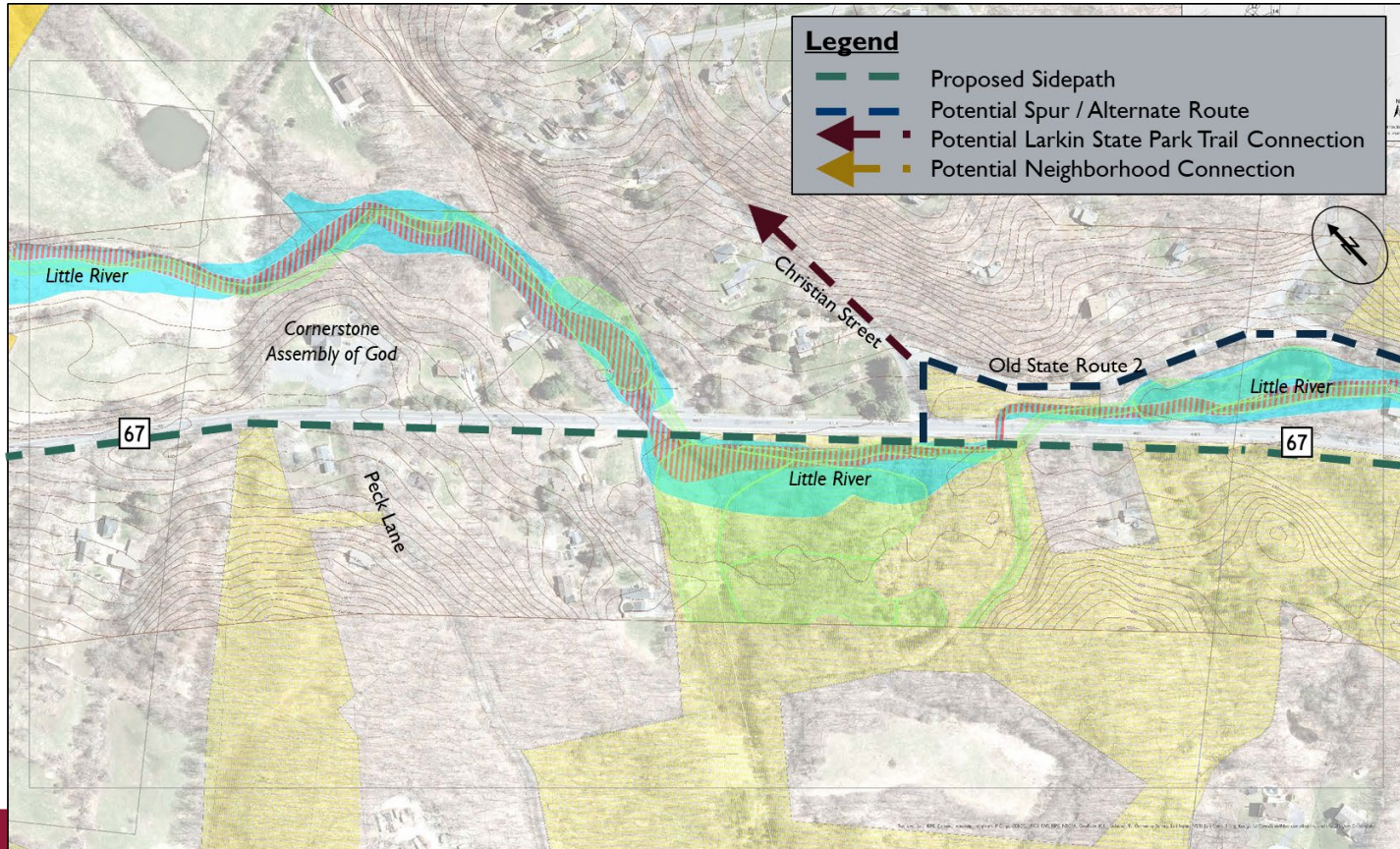
- ▶ More rural character
- ▶ Recreation opportunities
- ▶ Potential local street connections



Oxford Center to Southbury / Larkin



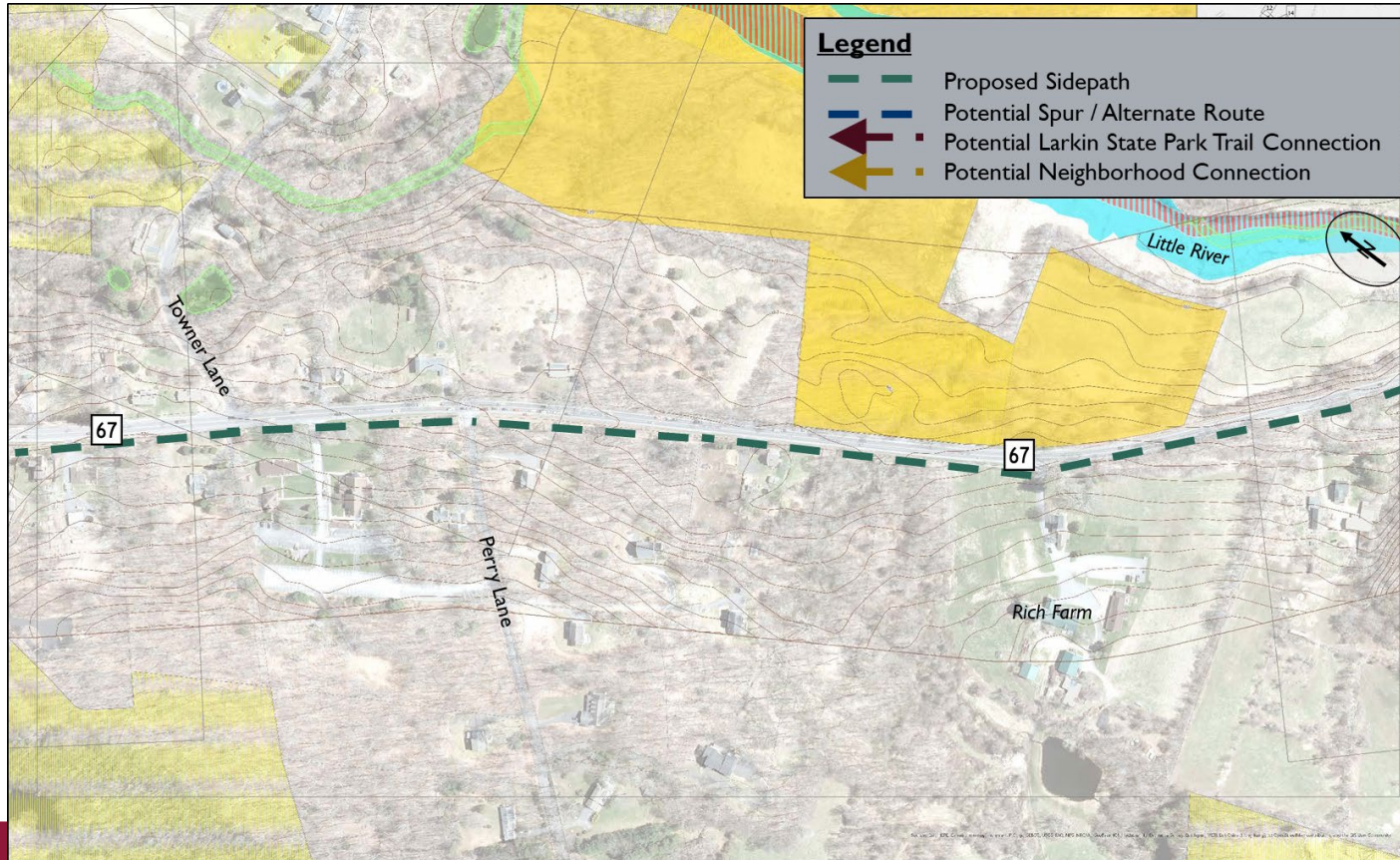
Oxford Center to Southbury / Larkin



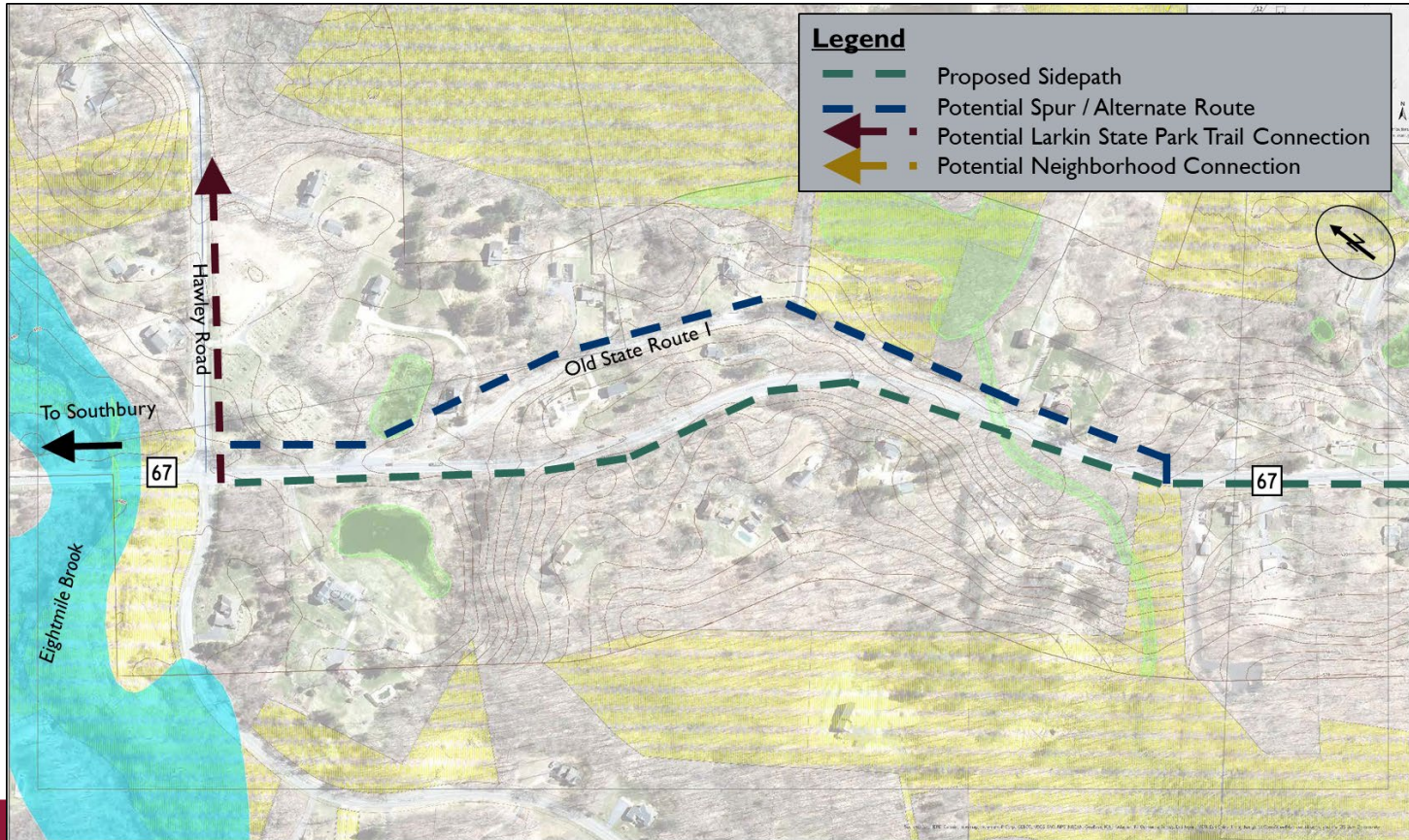
Oxford Center to Southbury / Larkin



Oxford Center to Southbury / Larkin

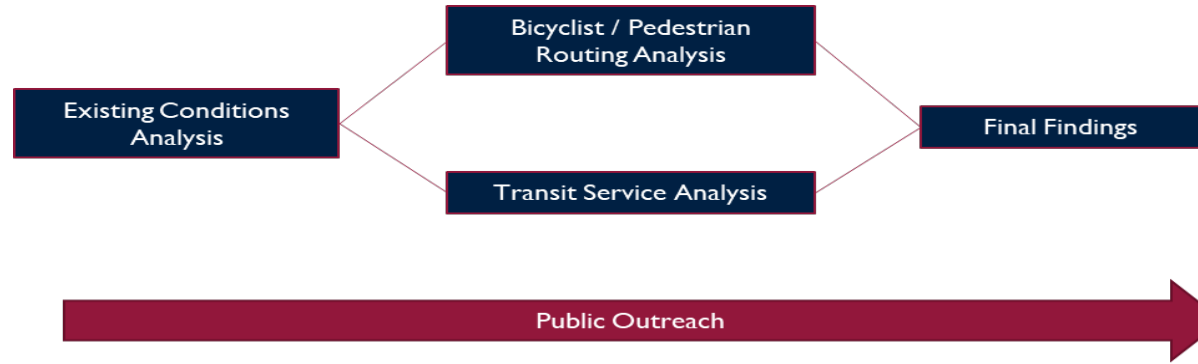


Oxford Center to Southbury / Larkin



Routing Next Steps

- ▶ Analyze pros / cons for optional routings
- ▶ Assess crossing locations
- ▶ Planning-level costs



Transit Options

- ▶ Demand: 13,600 rides per year, requiring two vehicles
- ▶ Commuter demand too limited
- ▶ 4 options:
 - Fixed route added to Waterbury Division
 - Expand VTD to include Oxford
 - Town-operated demand response
 - Subsidize Uber / Lyft services



Tentative Schedule

- ▶ Trail routing iteratively conducted – finalized spring 2021
- ▶ Transit component – fall 2020
- ▶ Wrap-up – late spring 2021

Ways to Comment

- ▶ Social media
- ▶ Online comment portal
- ▶ [Survey](#)





Thank you for your time!

